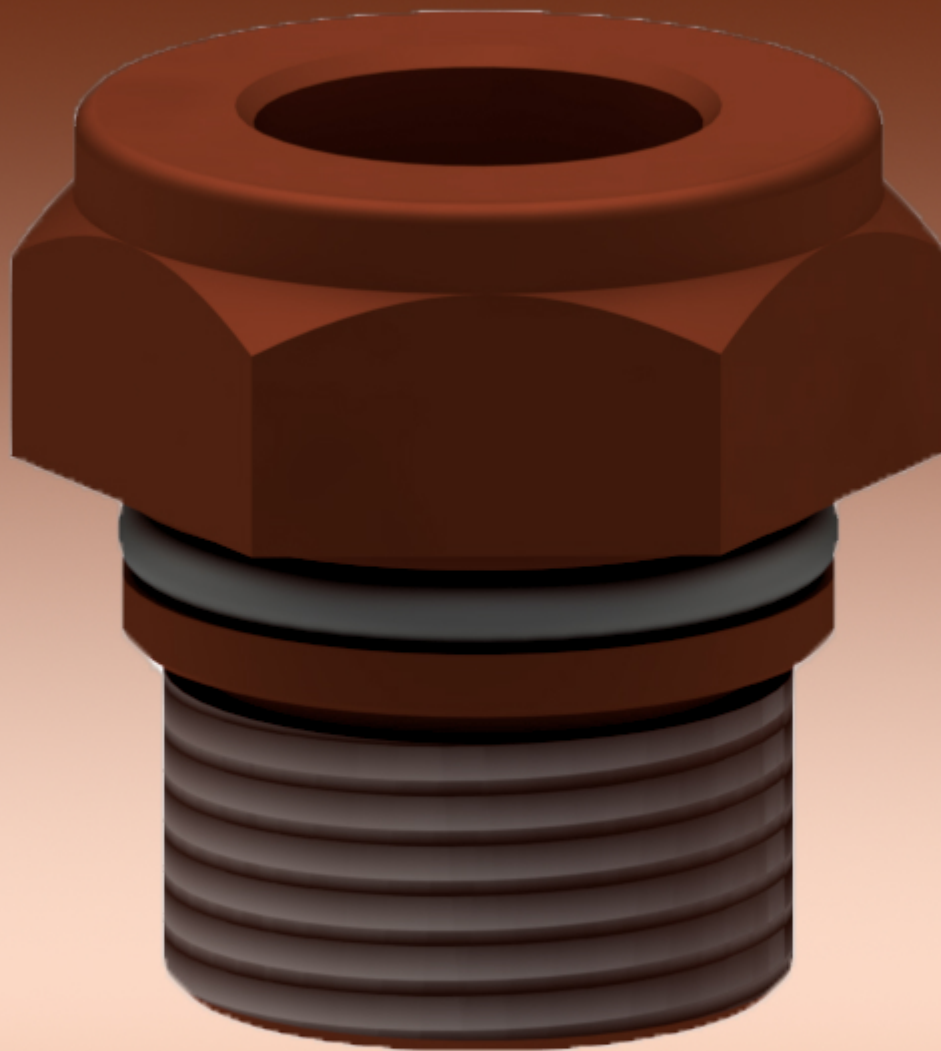


CYLINDER MOUNTED WELDING ACCESSORIES

ADAPTERS, HOLDERS, CLAMPS, AND WATER TUBES

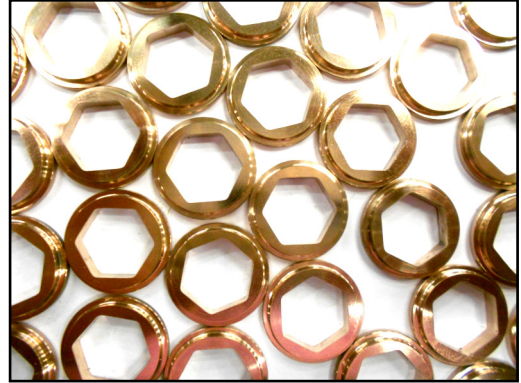


**Cadi
Company
Inc.**

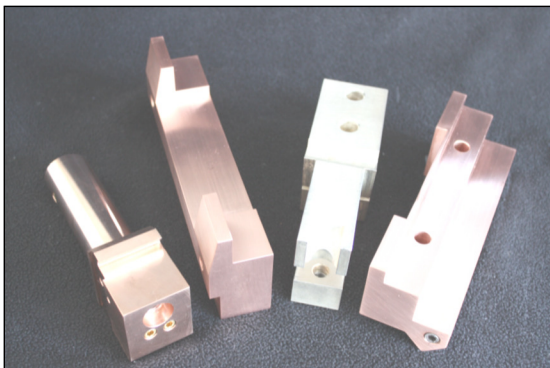
**MANUFACTURER AND
DISTRIBUTOR OF HIGH
CONDUCTIVITY COPPER ALLOYS
AND RESISTANCE WELDING
PRODUCTS**

**Cadi Company, Inc.
www.cadicompany.com**

**P.O. Box 1127, 60 Rado Drive, Naugatuck, CT 06770
800-243-3650 203-729-1111 Fax 203-729-1919**



Cadi Company is an ISO 9001:2015 certified manufacturer and distributor of high conductivity copper alloys; we specialize in copper that is used to manufacture resistance welding components such as welding wheels, electrodes and numerous other applications that demand performance beyond the capability of standard coppers. Copper alloys are in stock, ready to ship in rod, bar, plate, and special sizes.



Cadi Company, Inc.
www.cadicompany.com

P.O. Box 1127, 60 Rado Drive, Naugatuck, CT 06770
800-243-3650 203-729-1111 Fax 203-729-1919



**Cadi
Company
Inc.**

**P. O. Box 1127
60 Rado Drive
Naugatuck, CT 06770**

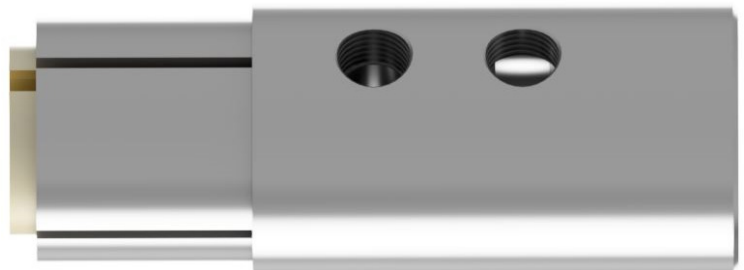
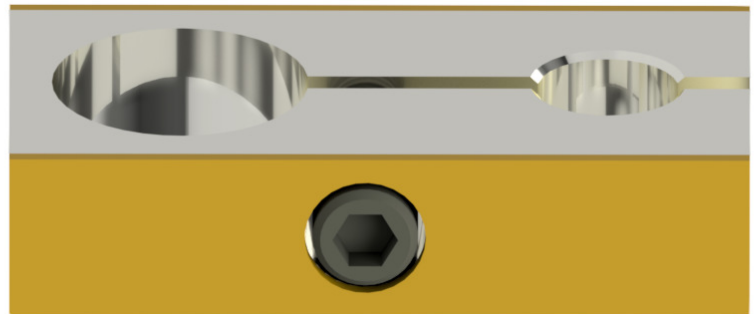
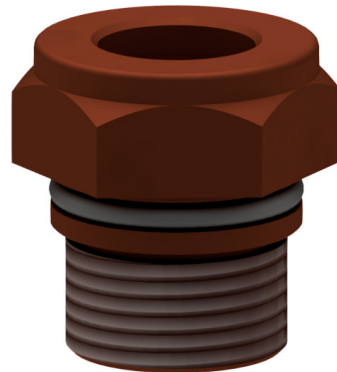
**(800)243-3650
(203)729-1111
(203)729-1919 FAX**

sales@cadicompany.com

This catalog is a sampling of our frequently manufactured copper accessories for resistance welding applications. We also manufacture a wide variety of special parts for these applications. If you don't find what you need here, please call our inside sales department at the numbers below for more information.

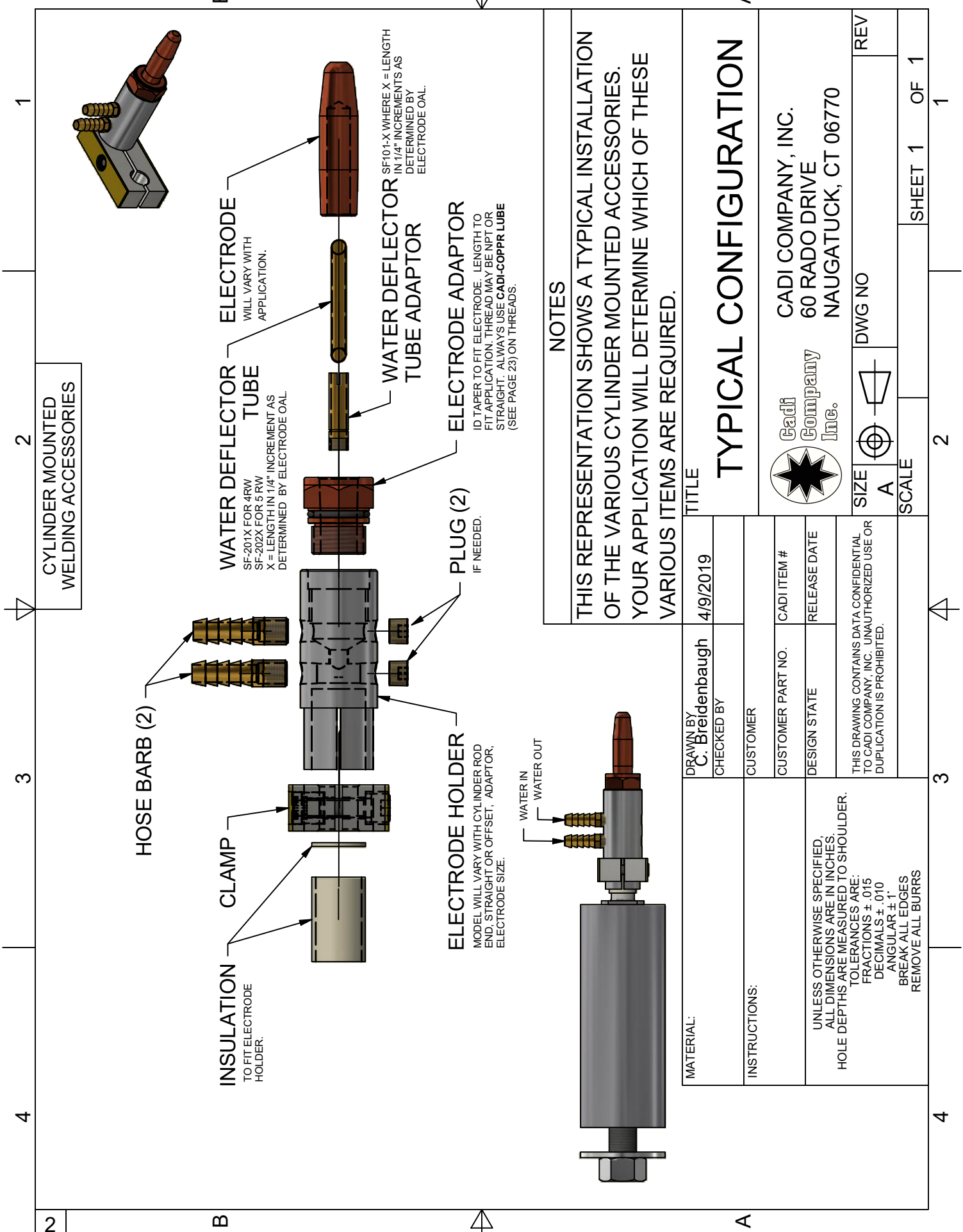
TABLE OF CONTENTS

TYPICAL CONFIGURATION LAYOUT	2
WATER TUBES AND INSULATION	3
ELECTRODE ADAPTERS	4-8
STRAIGHT HOLDERS WITH CLAMPS/LUGS	9-19
OFFSET HOLDERS WITH CLAMPS/LUGS	20-23
CADI COPPR-LUBE	24



Cadi Company, Inc.
www.cadicompany.com

**PO Box 1127, 60 Rado Drive, Naugatuck, CT 06770
(800)243-3650 (203)729-1111 Fax (203)729-1919**



CYLINDER MOUNTED WELDING ACCESSORIES

INSULATION
TO FIT ELECTRODE HOLDER.

CLAMP

HOSE BARB (2)

WATER DEFLECTOR TUBE
SF-201X FOR 4RW
SF-202X FOR 5 RW
X = LENGTH IN 1/4" INCREMENT AS DETERMINED BY ELECTRODE OAL.

ELECTRODE
WILL VARY WITH APPLICATION.

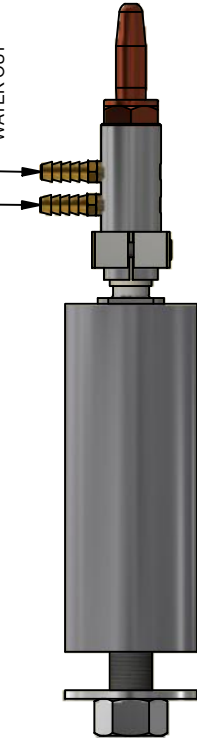
WATER DEFLECTOR TUBE ADAPTOR
SF101-X WHERE X = LENGTH IN 1/4" INCREMENTS AS DETERMINED BY ELECTRODE OAL.

PLUG (2)
IF NEEDED.

ELECTRODE ADAPTOR
ID TAPER TO FIT ELECTRODE. LENGTH TO FIT APPLICATION. THREAD MAY BE NPT OR STRAIGHT. ALWAYS USE CADI-COPPR LUBE (SEE PAGE 23) ON THREADS.

ELECTRODE HOLDER
MODEL WILL VARY WITH CYLINDER ROD END, STRAIGHT OR OFFSET, ADAPTOR, ELECTRODE SIZE.

WATER IN
WATER OUT

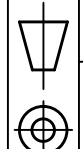


NOTES

THIS REPRESENTATION SHOWS A TYPICAL INSTALLATION OF THE VARIOUS CYLINDER MOUNTED ACCESSORIES. YOUR APPLICATION WILL DETERMINE WHICH OF THESE VARIOUS ITEMS ARE REQUIRED.

MATERIAL:	DRAWN BY	C. Breidenbaugh		4/9/2019		TITLE		
	CHECKED BY	CUSTOMER		CUSTOMER PART NO.		CADI ITEM #		
INSTRUCTIONS:	UNLESS OTHERWISE SPECIFIED ALL DIMENSIONS ARE IN INCHES. HOLE DEPTHS ARE MEASURED TO SHOULDER. TOLERANCES ARE: FRACTIONS ± .015 DECIMALS ± .010 ANGULAR ± 1' BREAK ALL EDGES REMOVE ALL BURRS		DESIGN STATE		RELEASE DATE		CADI COMPANY, INC. 60 RADO DRIVE NAUGATUCK, CT 06770	
	THIS DRAWING CONTAINS DATA CONFIDENTIAL TO CADI COMPANY, INC. UNAUTHORIZED USE OR DUPLICATION IS PROHIBITED.		CUSTOMER PART NO.		RELEASE DATE		CADI COMPANY, INC. 60 RADO DRIVE NAUGATUCK, CT 06770	
SCALE		SCALE		SCALE		SCALE		
SIZE		SIZE		SIZE		SIZE		
DWG NO		DWG NO		DWG NO		DWG NO		
REV		REV		REV		REV		
SHEET 1		SHEET 1		SHEET 1		SHEET 1		
OF 1		OF 1		OF 1		OF 1		

TYPICAL CONFIGURATION



SIZE A
SCALE

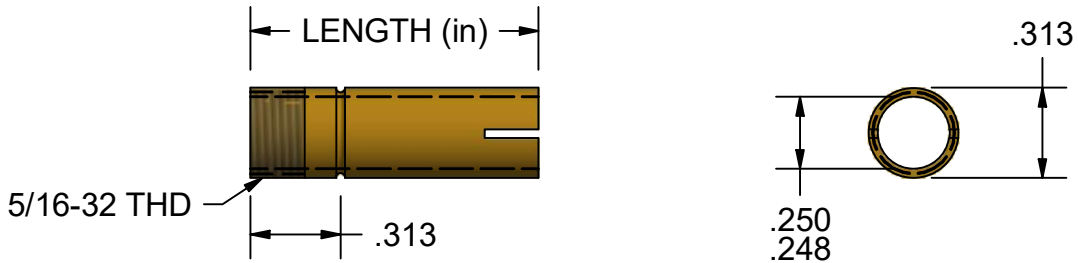
2
1



**Gadi
Company
Inc.**

WATER TUBES AND INSULATION

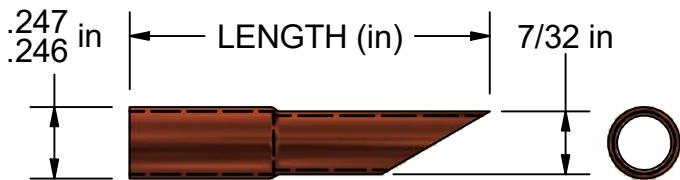
WATER DEFLECTOR TUBE ADAPTOR



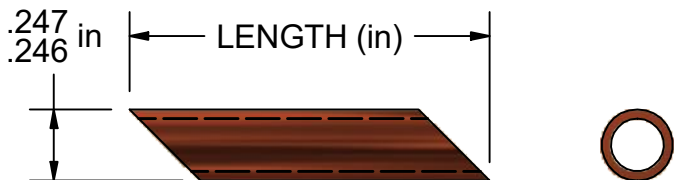
MATERIAL: BRASS

PART NUMBER	LENGTH	PART NUMBER	LENGTH	PART NUMBER	LENGTH
SF-101-6	3/4	SF-101-14	1-3/4	SF-101-22	2-3/4
SF-101-8	1.0	SF-101-16	2.0	SF-101-24	3.0
SF-101-10	1-1/4	SF-101-18	2-1/4	SF-101-26	3-1/4
SF-101-12	1-1/2	SF-101-20	2-1/2	SF-101-28	3-1/2

WATER DEFLECTOR TUBE (USE WITH 4 RW ELECTRODES)



WATER DEFLECTOR TUBE (USE WITH 5 RW ELECTRODES)



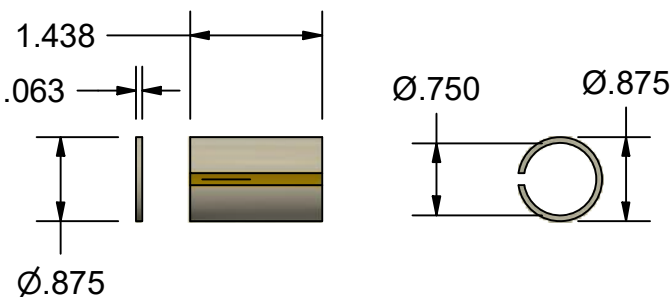
MATERIAL: SEAMLESS COPPER TUBE

PART NUMBER	LENGTH	PART NUMBER	LENGTH
SF-201-5	1-1/4	SF-201-15	3-3/4
SF-201-6	1-1/2	SF-201-16	4.0
SF-201-7	1-3/4	SF-201-17	4-1/4
SF-201-8	2.0	SF-201-18	4-1/2
SF-201-9	2-1/4	SF-201-19	4-3/4
SF-201-10	2-1/2	SF-201-20	5.0
SF-201-11	2-3/4	SF-201-21	5-1/4
SF-201-12	3.0	SF-201-22	5-1/2
SF-201-13	3-1/4	SF-201-23	5-3/4
SF-201-14	3-1/2	SF-201-24	6.0

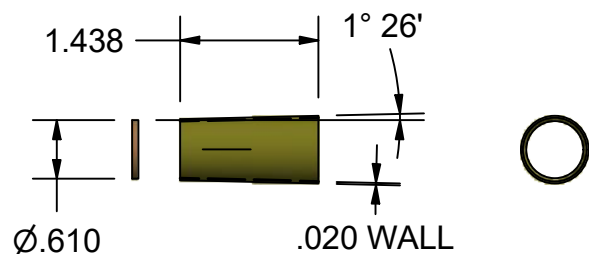
MATERIAL: SEAMLESS COPPER TUBE

PART NUMBER	LENGTH	PART NUMBER	LENGTH
SF-202-5	1-1/4	SF-202-15	3-3/4
SF-202-6	1-1/2	SF-202-16	4.0
SF-202-7	1-3/4	SF-202-17	4-1/4
SF-202-8	2.0	SF-202-18	4-1/2
SF-202-9	2-1/4	SF-202-19	4-3/4
SF-202-10	2-1/2	SF-202-20	5.0
SF-202-11	2-3/4	SF-202-21	5-1/4
SF-202-12	3.0	SF-202-22	5-1/2
SF-202-13	3-1/4	SF-202-23	5-3/4
SF-202-14	3-1/2	SF-202-24	6.0

SH SERIES INSULATION



H SERIES INSULATION

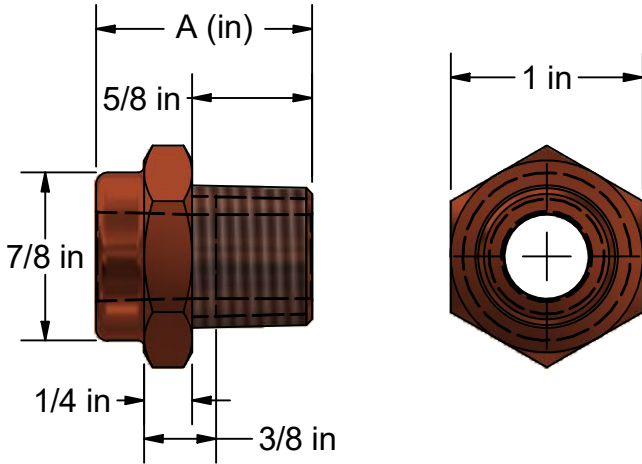




Gadi
Company
Inc.

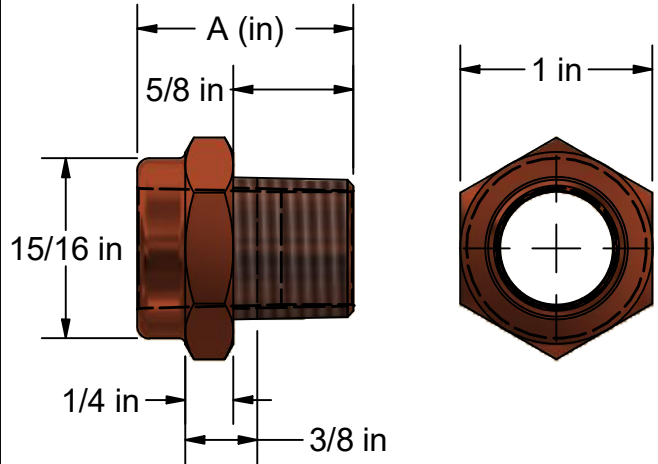
1/2-14 NPT THREADED ADAPTORS 4 AND 5 RW

4RW ELECTRODE TAPER



MATERIAL: RWMA CLASS 2
(CLASS 3 AVAILABLE ON
REQUEST)

5RW ELECTRODE TAPER



MATERIAL: RWMA CLASS 2
(CLASS 3 AVAILABLE ON
REQUEST)

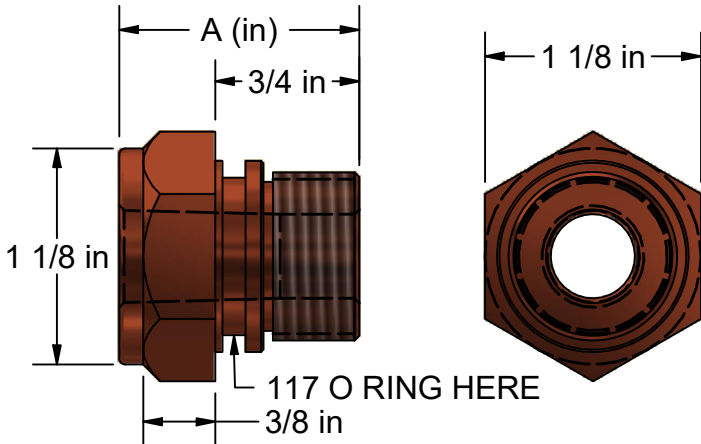
	A		A
PART NUMBER	OVERALL LENGTH	PART NUMBER	OVERALL LENGTH
HA182-100-050P-087-4	7/8	HA182-100-050P-087-5	7/8
HA182-100-050P-112-4	1-1/8	HA182-100-050P-112-5	1-1/8
HA182-100-050P-137-4	1-3/8	HA182-100-050P-137-5	1-3/8
HA182-100-050P-162-4	1-5/8	HA182-100-050P-162-5	1-5/8
HA182-100-050P-187-4	1-7/8	HA182-100-050P-187-5	1-7/8
HA182-100-050P-212-4	2-1/8	HA182-100-050P-212-5	2-1/8
HA182-100-050P-237-4	2-3/8	HA182-100-050P-237-5	2-3/8
HA182-100-050P-262-4	2-5/8	HA182-100-050P-262-5	2-5/8
HA182-100-050P-287-4	2-7/8	HA182-100-050P-287-5	2-7/8
HA182-100-050P-312-4	3-1/8	HA182-100-050P-312-5	3-1/8
HA182-100-050P-337-4	3-3/8	HA182-100-050P-337-5	3-3/8
HA182-100-050P-362-4	3-5/8	HA182-100-050P-362-5	3-5/8
HA182-100-050P-387-4	3-7/8	HA182-100-050P-387-5	3-7/8



Gadi
Company
Inc.

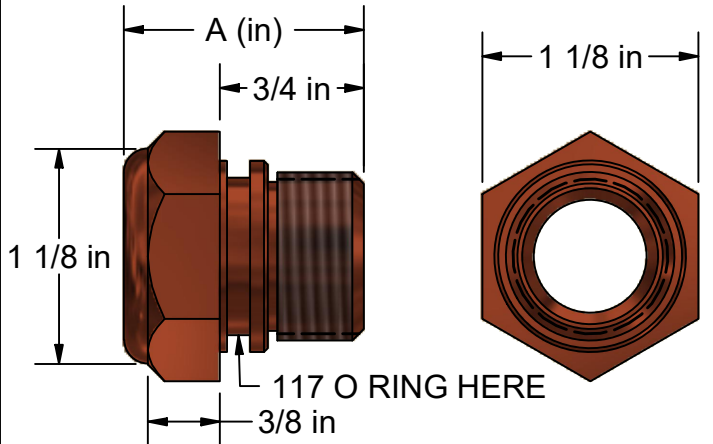
7/8-14 UNF THREADED ADAPTORS 4 AND 5 RW

4RW ELECTRODE TAPER



MATERIAL: RWMA CLASS 2
(CLASS 3 AVAILABLE ON
REQUEST)

5RW ELECTRODE TAPER



MATERIAL: RWMA CLASS 2
(CLASS 3 AVAILABLE ON
REQUEST)

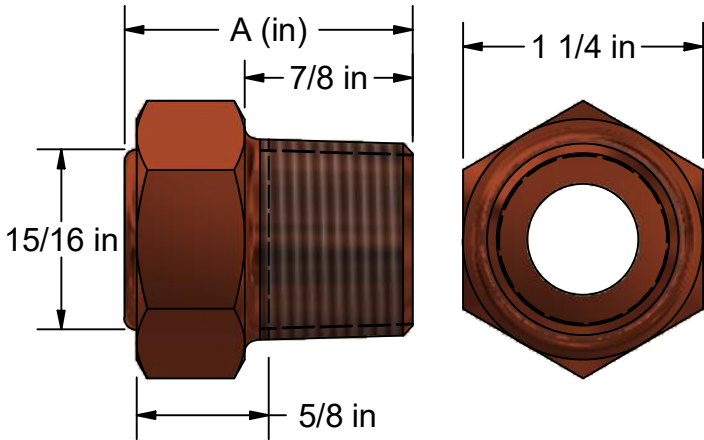
	A		A
PART NUMBER	OVERALL LENGTH	PART NUMBER	OVERALL LENGTH
HA182-112-087S-112-4	1-1/8	HA182-112-087S-112-5	1-1/8
HA182-112-087S-125-4	1-1/4	HA182-112-087S-125-5	1-1/4
HA182-112-087S-137-4	1-3/8	HA182-112-087S-137-5	1-3/8
HA182-112-087S-150-4	1-1/2	HA182-112-087S-150-5	1-1/2
HA182-112-087S-162-4	1-5/8	HA182-112-087S-162-5	1-5/8
HA182-112-087S-175-4	1-3/4	HA182-112-087S-175-5	1-3/4
HA182-112-087S-187-4	1-7/8	HA182-112-087S-187-5	1-7/8
HA182-112-087S-200-4	2	HA182-112-087S-200-5	2
HA182-112-087S-212-4	2-1/8	HA182-112-087S-212-5	2-1/8
HA182-112-087S-225-4	2-1/4	HA182-112-087S-225-5	2-1/4
HA182-112-087S-237-4	2-3/8	HA182-112-087S-237-5	2-3/8
HA182-112-087S-250-4	2-1/2	HA182-112-087S-250-5	2-1/2
HA182-112-087S-262-4	2-5/8	HA182-112-087S-262-5	2-5/8



Gadi
Company
Inc.

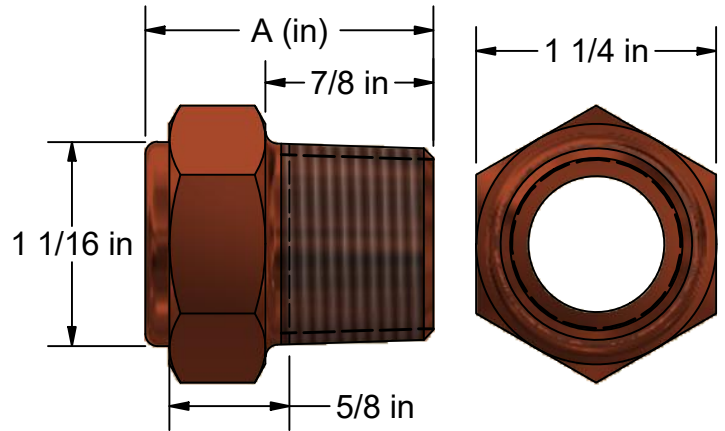
3/4-14 NPT THREADED ADAPTORS 5 AND 6 RW

5RW ELECTRODE TAPER



MATERIAL: RWMA CLASS 2
(CLASS 3 AVAILABLE ON
REQUEST)

6RW ELECTRODE TAPER



MATERIAL: RWMA CLASS 2
(CLASS 3 AVAILABLE ON
REQUEST)

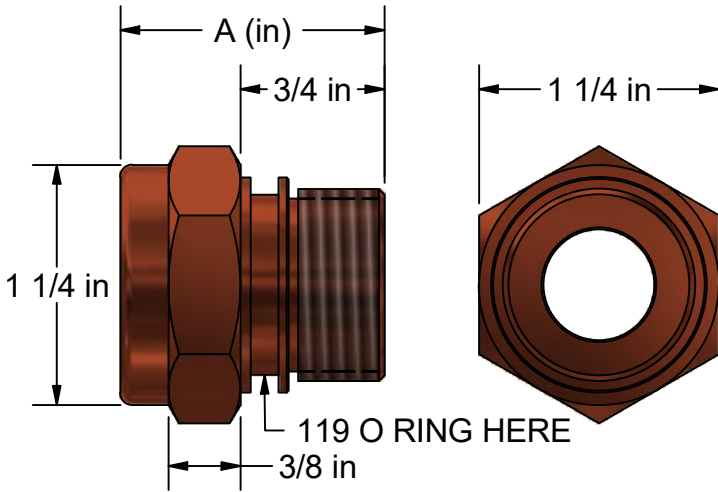
	A		A
PART NUMBER	OVERALL LENGTH	PART NUMBER	OVERALL LENGTH
HA182-125-075P-137-5	1-3/8	HA182-125-075P-137-6	1-3/8
HA182-125-075P-150-5	1-1/2	HA182-125-075P-150-6	1-1/2
HA182-125-075P-162-5	1-5/8	HA182-125-075P-162-6	1-5/8
HA182-125-075P-175-5	1-3/4	HA182-125-075P-175-6	1-3/4
HA182-125-075P-187-5	1-7/8	HA182-125-075P-187-6	1-7/8
HA182-125-075P-200-5	2	HA182-125-075P-200-6	2
HA182-125-075P-212-5	2-1/8	HA182-125-075P-212-6	2-1/8
HA182-125-075P-225-5	2-1/4	HA182-125-075P-225-6	2-1/4
HA182-125-075P-237-5	2-3/8	HA182-125-075P-238-6	2-3/8
HA182-125-075P-250-5	2-1/2	HA182-125-075P-250-6	2-1/2
HA182-125-075P-262-5	2-5/8	HA182-125-075P-262-6	2-5/8
HA182-125-075P-275-5	2-3/4	HA182-125-075P-275-6	2-3/4
HA182-125-075P-287-5	2-7/8	HA182-125-075P-287-6	2-7/8



Gadi
Company
Inc.

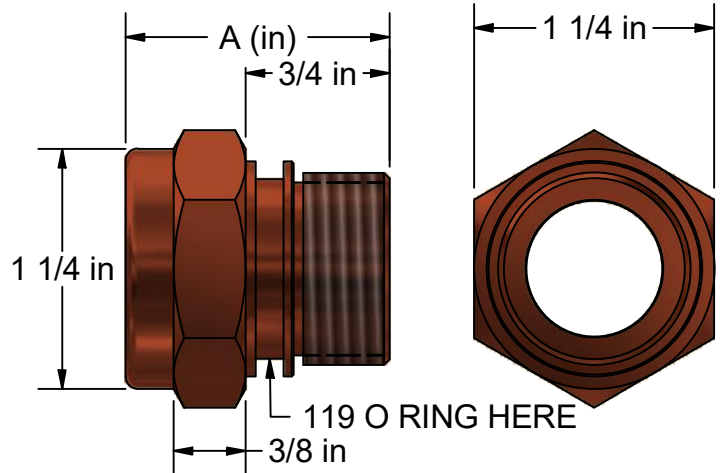
1-12 UNF THREADED ADAPTORS 5 AND 6 RW

5RW ELECTRODE
TAPER



MATERIAL: RWMA CLASS 2
(CLASS 3 AVAILABLE ON
REQUEST)

6RW ELECTRODE
TAPER



MATERIAL: RWMA CLASS 2
(CLASS 3 AVAILABLE ON
REQUEST)

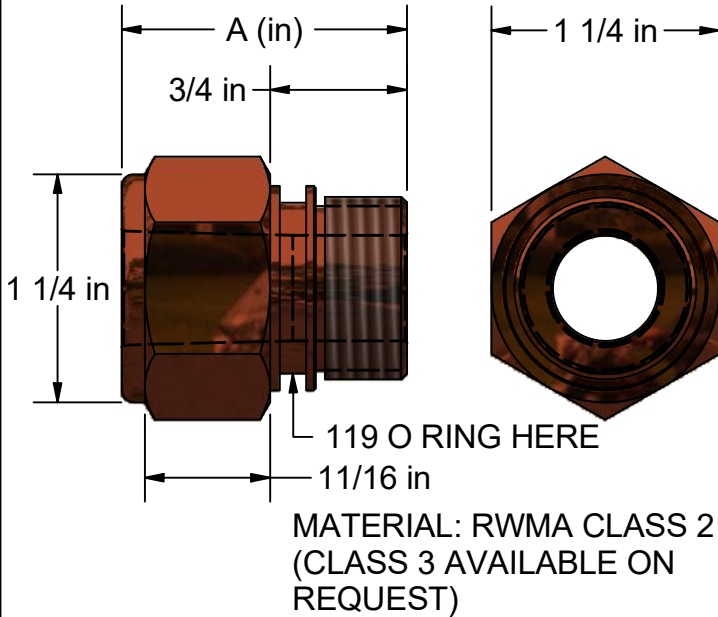
	A		A
PART NUMBER	OVERALL LENGTH	PART NUMBER	OVERALL LENGTH
HA182-125-100S-112-5	1-1/8	HA182-125-100S-112-6	1-1/8
HA182-125-100S-125-5	1-1/4	HA182-125-100S-125-6	1-1/4
HA182-125-100S-137-5	1-3/8	HA182-125-100S-137-6	1-3/8
HA182-125-100S-150-5	1-1/2	HA182-125-100S-150-6	1-1/2
HA182-125-100S-162-5	1-5/8	HA182-125-100S-162-6	1-5/8
HA182-125-100S-175-5	1-3/4	HA182-125-100S-175-6	1-3/4
HA182-125-100S-187-5	1-7/8	HA182-125-100S-187-6	1-7/8
HA182-125-100S-200-5	2	HA182-125-100S-200-6	2
HA182-125-100S-212-5	2-1/8	HA182-125-100S-212-6	2-1/8
HA182-125-100S-225-5	2-1/4	HA182-125-100S-225-6	2-1/4
HA182-125-100S-237-5	2-3/8	HA182-125-100S-237-6	2-3/8
HA182-125-100S-250-5	2-1/2	HA182-125-100S-250-6	2-1/2
HA182-125-100S-262-5	2-5/8	HA125-125-100S-262-6	2-5/8



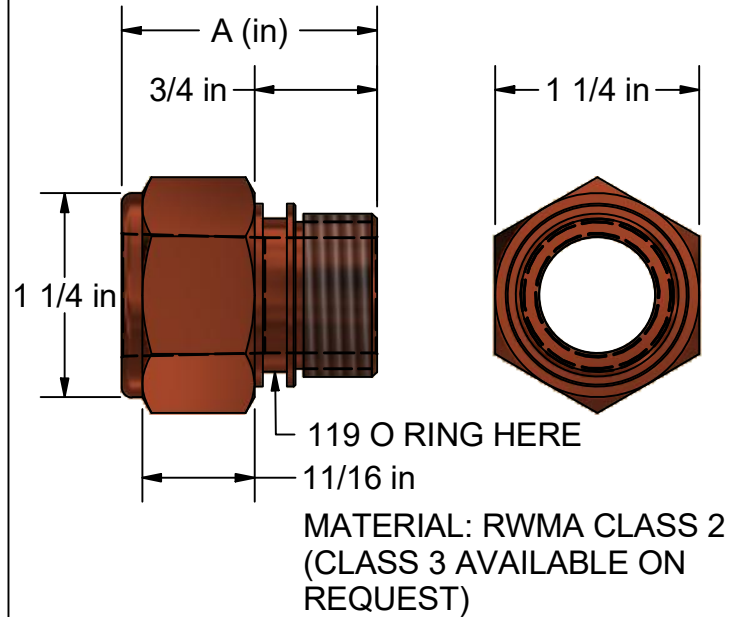
Gadi
Company
Inc.

1-12 UNF THREADED ADAPTORS 5 AND 6 RW

5RW ELECTRODE
TAPER



6RW ELECTRODE
TAPER



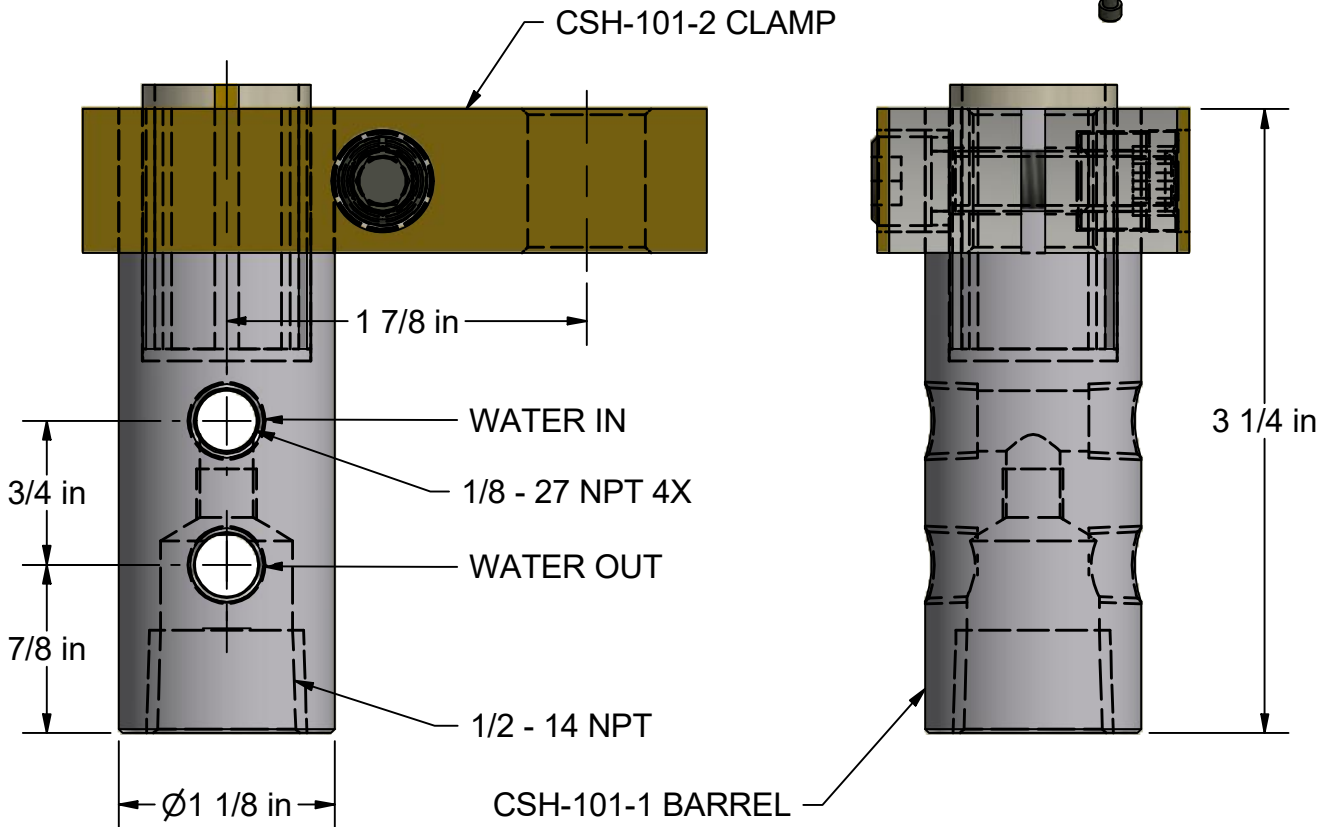
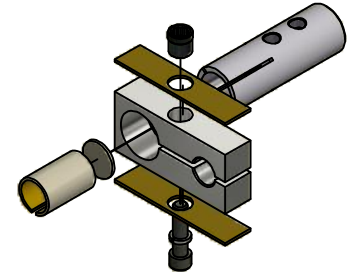
	A		A
PART NUMBER	OVERALL LENGTH	PART NUMBER	OVERALL LENGTH
HA182-125-100S-143-5	1-7/16	HA182-125-100S-143-6	1-7/16
HA182-125-100S-156-5	1-9/16	HA182-125-100S-156-6	1-9/16
HA182-125-100S-168-5	1-11/16	HA182-125-100S-168-6	1-11/16
HA182-125-100S-181-5	1-13/16	HA182-125-100S-181-6	1-13/16
HA182-125-100S-193-5	1-15/16	HA182-125-100S-193-6	1-15/16
HA182-125-100S-206-5	2-1/16	HA182-125-100S-206-6	2-1/16
HA182-125-100S-218-5	2-3/16	HA182-125-100S-218-6	2-3/16
HA182-125-100S-231-5	2-5/16	HA182-125-100S-231-6	2-5/16
HA182-125-100S-243-5	2-7/16	HA182-125-100S-243-6	2-7/16
HA182-125-100S-256-5	2-9/16	HA182-125-100S-256-6	2-9/16
HA182-125-100S-268-5	2-11/16	HA182-125-100S-268-6	2-11/16
HA182-125-100S-281-5	2-13/16	HA182-125-100S-281-6	2-13/16
HA182-125-100S-293-5	2-15/16	HA182-125-100S-293-6	2-15/16



Gadi
Company
Inc.

CSH-101-A ELECTRODE HOLDER ASSEMBLY

FITS STANDARD WELD
CYLINDERS WITH TYPE "A" AND
TYPE "N" PISTON ROD ENDS



COMPATIBLE WITH THE FOLLOWING ELECTRODE ADAPTORS
(LONGER ADAPTORS AVAILABLE UPON REQUEST.)

1/2" NPT WITH 4RW ELECTRODE TAPER	
PART NUMBER	OVERALL LENGTH (in)
HA182-100-050P-087-4	7/8
HA182-100-050P-112-4	1-1/8
HA182-100-050P-137-4	1-3/8
HA182-100-050P-162-4	1-5/8
HA182-100-050P-187-4	1-7/8
HA182-100-050P-212-4	2-1/8
HA182-100-050P-237-4	2-3/8
HA182-100-050P-262-4	2-5/8
HA182-100-050P-287-4	2-7/8
HA182-100-050P-312-4	3-1/8
HA182-100-050P-337-4	3-3/8

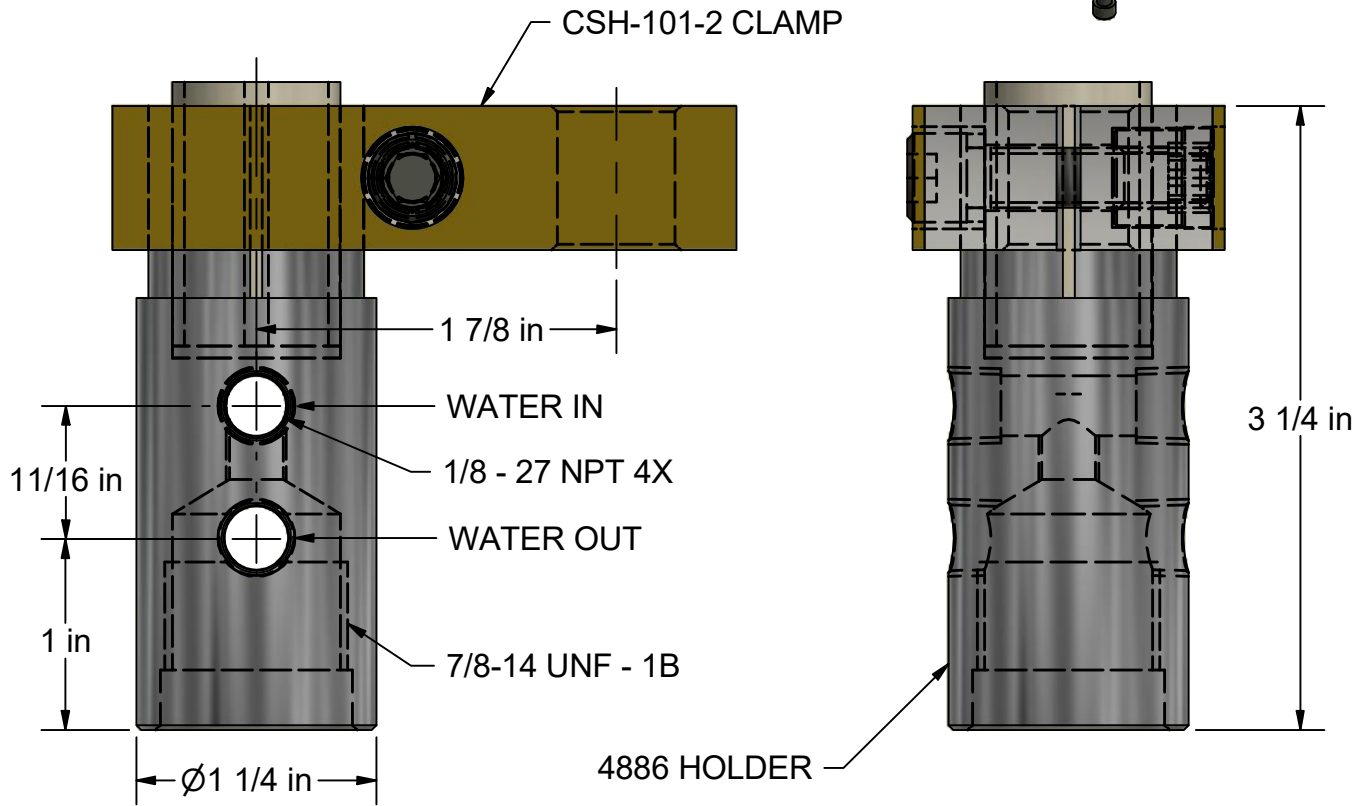
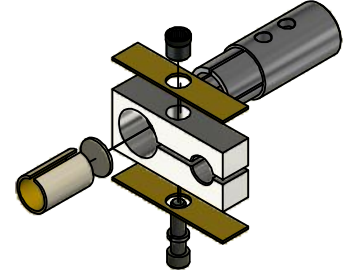
1/2" NPT WITH 5RW ELECTRODE TAPER	
PART NUMBER	OVERALL LENGTH (in)
HA182-100-050P-087-5	7/8
HA182-100-050P-112-5	1-1/8
HA182-100-050P-137-5	1-3/8
HA182-100-050P-162-5	1-5/8
HA182-100-050P-187-5	1-7/8
HA182-100-050P-212-5	2-1/8
HA182-100-050P-237-5	2-3/8
HA182-100-050P-262-5	2-5/8
HA182-100-050P-287-5	2-7/8
HA182-100-050P-312-5	3-1/8
HA182-100-050P-337-5	3-3/8



Gadi
Company
Inc.

CSH-101-A 7/8S ELECTRODE HOLDER ASSEMBLY

FITS STANDARD WELD
CYLINDERS WITH TYPE "A" AND
TYPE "N" PISTON ROD ENDS



COMPATIBLE WITH THE FOLLOWING ELECTRODE ADAPTORS
(LONGER ADAPTORS AVAILABLE UPON REQUEST.)

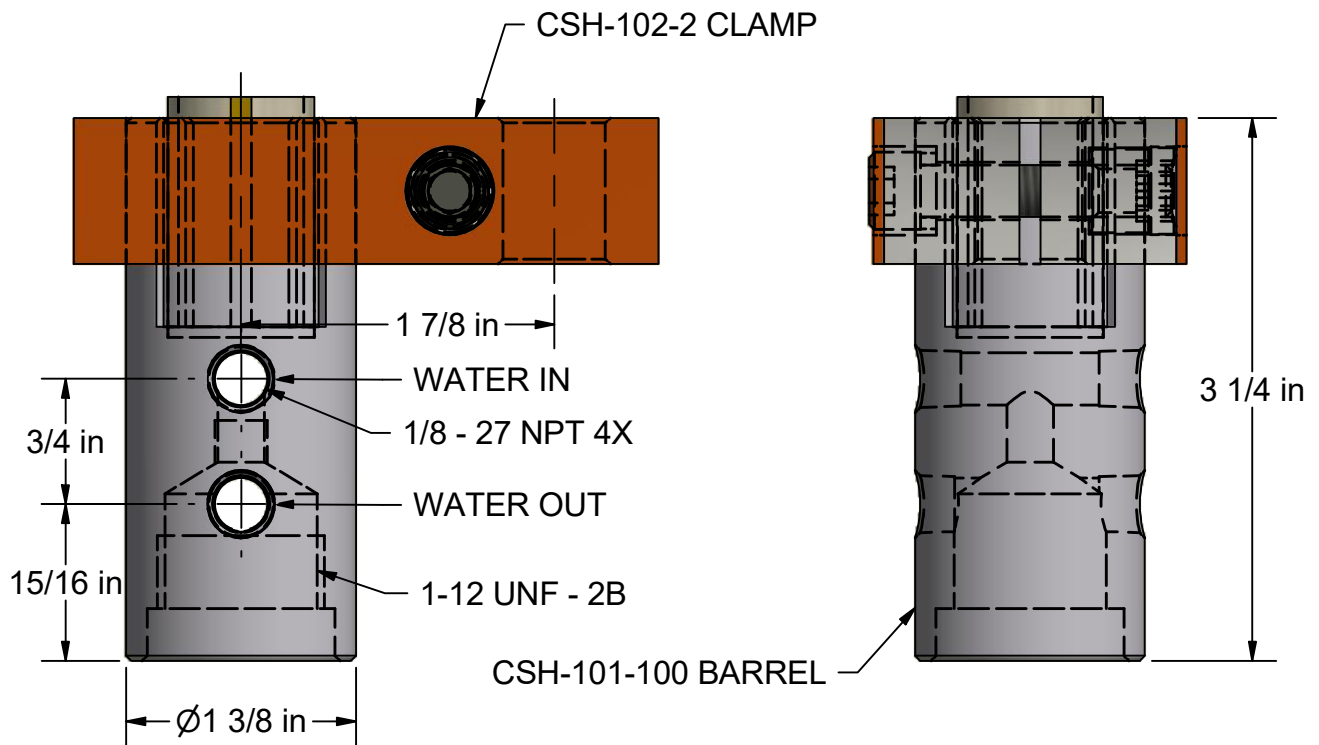
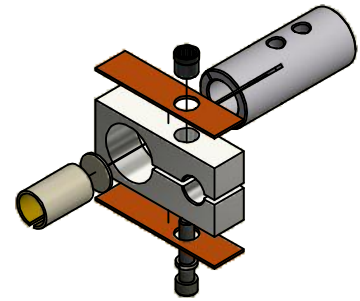
7/8-14 WITH 4RW ELECTRODE TAPER	
PART NUMBER	OVERALL LENGTH (in)
HA182-112-087S-112-4	1-1/8
HA182-112-087S-125-4	1-1/4
HA182-112-087S-137-4	1-3/8
HA182-112-087S-150-4	1-1/2
HA182-125-087S-162-4	1-5/8
HA182-112-087S-175-4	1-3/4
HA182-112-087S-187-4	1-7/8
HA182-112-087S-200-4	2
HA182-112-087S-212-4	2-1/8
HA182-112-087S-225-4	2-1/4
HA182-112-087S-237-4	2-3/8

7/8-14 WITH 5RW ELECTRODE TAPER	
PART NUMBER	OVERALL LENGTH (in)
HA182-112-087S-112-5	1-1/8
HA182-112-087S-125-5	1-1/4
HA182-112-087S-137-5	1-3/8
HA182-112-087S-150-5	1-1/2
HA182-112-087S-162-5	1-5/8
HA182-112-087S-175-5	1-3/4
HA182-112-087S-187-5	1-7/8
HA182-112-087S-200-5	2
HA182-112-087S-212-5	2-1/8
HA182-112-087S-225-5	2-1/4
HA182-112-087S-237-5	2-3/8



CSH-101-A-1S ELECTRODE HOLDER ASSEMBLY

FITS STANDARD WELD CYLINDERS WITH TYPE "A" AND TYPE "N" PISTON ROD ENDS



COMPATIBLE WITH THE FOLLOWING ELECTRODE ADAPTORS
(LONGER ADAPTORS AVAILABLE UPON REQUEST.)

1-12 WITH 5RW ELECTRODE TAPER	
PART NUMBER	OVERALL LENGTH (in)
HA182-125-100S-112-5	1-1/8
HA182-125-100S-125-5	1-1/4
HA182-125-100S-137-5	1-3/8
HA182-125-100S-150-5	1-1/2
HA182-125-100S-162-5	1-5/8
HA182-125-100S-175-5	1-3/4
HA182-125-100S-187-5	1-7/8
HA182-125-100S-200-5	2
HA182-125-100S-212-5	2-1/8
HA182-125-100S-225-5	2-1/4
HA182-125-100S-237-5	2-3/8

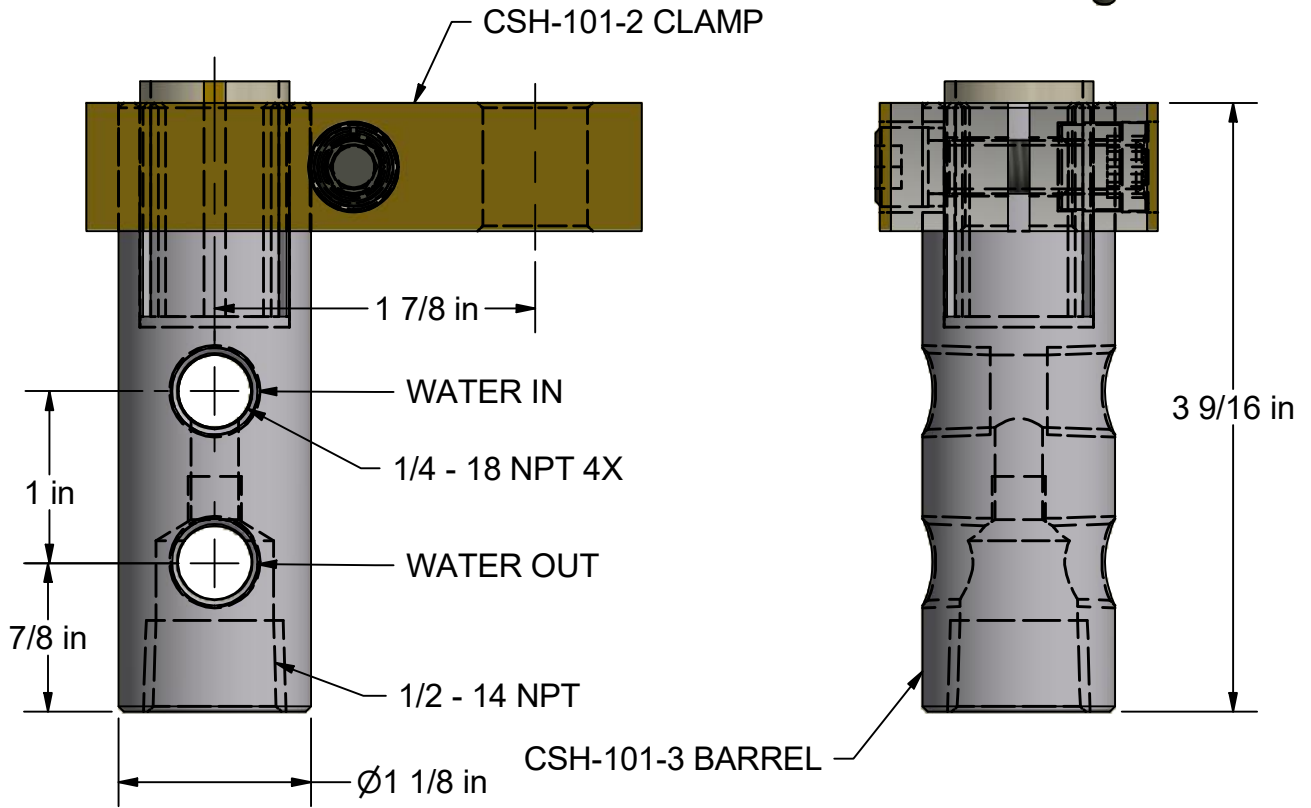
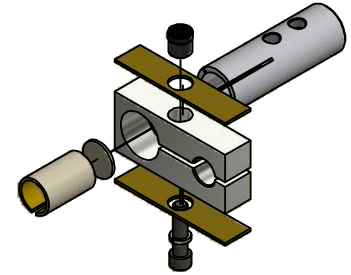
1-12 WITH 6RW ELECTRODE TAPER	
PART NUMBER	OVERALL LENGTH (in)
HA182-125-100S-112-6	1-1/8
HA182-125-100S-125-6	1-1/4
HA182-125-100S-137-6	1-3/8
HA182-125-100S-150-6	1-1/2
HA182-125-100S-162-6	1-5/8
HA182-125-100S-175-6	1-3/4
HA182-125-100S-187-6	1-7/8
HA182-125-100S-200-6	2
HA182-125-100S-212-6	2-1/8
HA182-125-100S-225-6	2-1/4
HA182-125-100S-237-6	2-3/8



Gadi
Company
Inc.

CSH-101-B ELECTRODE HOLDER ASSEMBLY

FITS STANDARD WELD
CYLINDERS WITH TYPE "A" AND
TYPE "N" PISTON ROD ENDS



COMPATIBLE WITH THE FOLLOWING ELECTRODE ADAPTORS
(LONGER ADAPTORS AVAILABLE UPON REQUEST.)

1/2" NPT WITH 4RW ELECTRODE TAPER	
PART NUMBER	OVERALL LENGTH (in)
HA182-100-050P-087-4	7/8
HA182-100-050P-112-4	1-1/8
HA182-100-050P-137-4	1-3/8
HA182-100-050P-162-4	1-5/8
HA182-100-050P-187-4	1-7/8
HA182-100-050P-212-4	2-1/8
HA182-100-050P-237-4	2-3/8
HA182-100-050P-262-4	2-5/8
HA182-100-050P-287-4	2-7/8
HA182-100-050P-312-4	3-1/8
HA182-100-050P-337-4	3-3/8

1/2" NPT WITH 5RW ELECTRODE TAPER	
PART NUMBER	OVERALL LENGTH (in)
HA182-100-050P-087-5	7/8
HA182-100-050P-112-5	1-1/8
HA182-100-050P-137-5	1-3/8
HA182-100-050P-162-5	1-5/8
HA182-100-050P-187-5	1-7/8
HA182-100-050P-212-5	2-1/8
HA182-100-050P-237-5	2-3/8
HA182-100-050P-262-5	2-5/8
HA182-100-050P-287-5	2-7/8
HA182-100-050P-312-5	3-1/8
HA182-100-050P-337-5	3-3/8

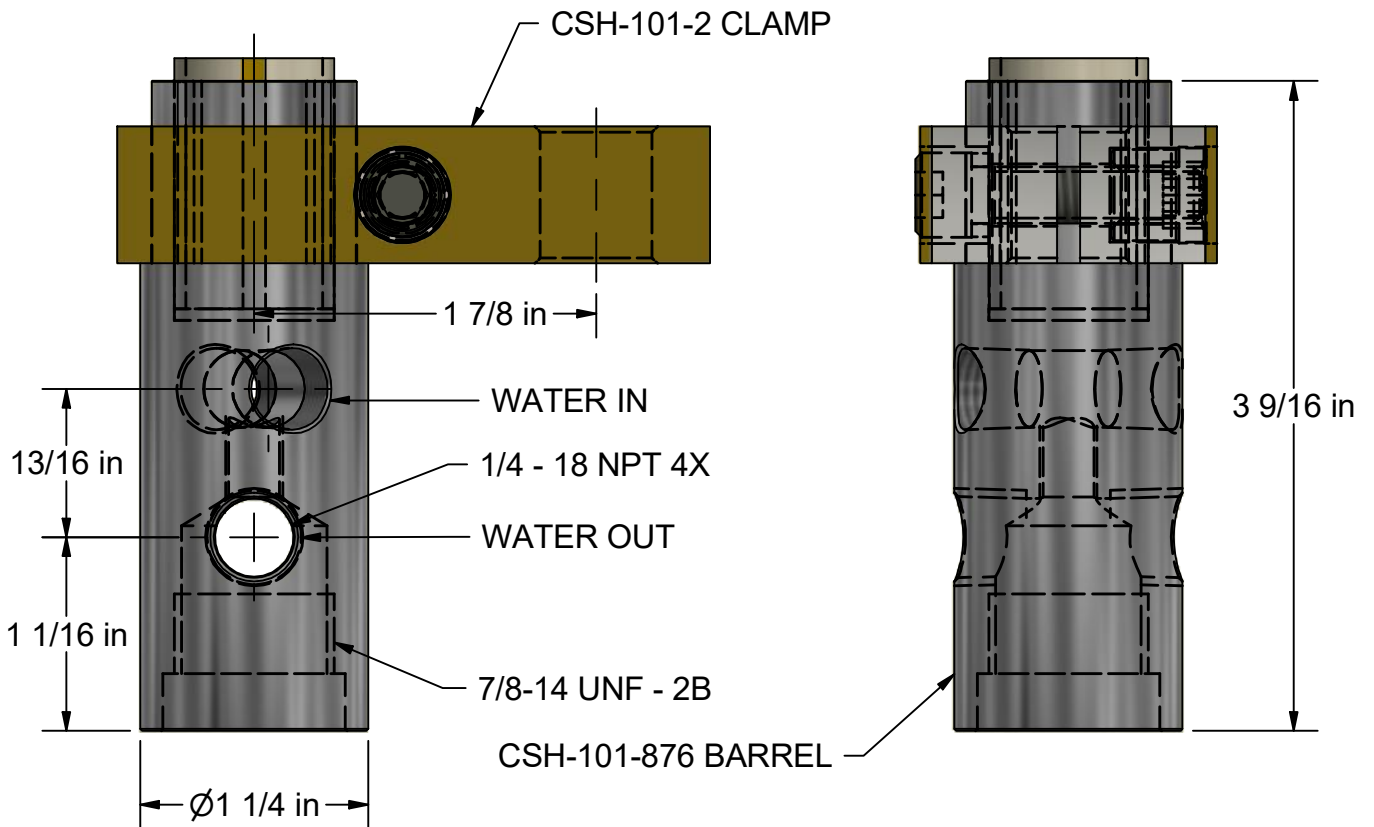
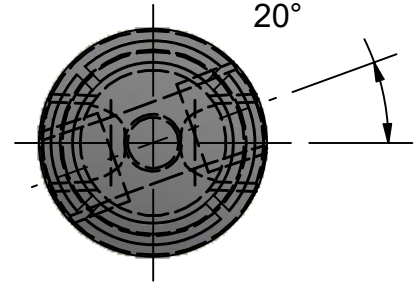


Gadi
Company
Inc.

CSH-101-B 7/8S ELECTRODE HOLDER ASSEMBLY

FITS STANDARD WELD
CYLINDERS WITH TYPE "A" AND
TYPE "N" PISTON ROD ENDS

WATER HOLES
OFFSET BY
20°



COMPATIBLE WITH THE FOLLOWING ELECTRODE ADAPTORS
(LONGER ADAPTORS AVAILABLE UPON REQUEST.)

7/8-14 WITH 4RW ELECTRODE TAPER	
PART NUMBER	OVERALL LENGTH (in)
HA182-112-087S-112-4	1-1/8
HA182-112-087S-125-4	1-1/4
HA182-112-087S-137-4	1-3/8
HA182-112-087S-150-4	1-1/2
HA182-125-087S-162-4	1-5/8
HA182-112-087S-175-4	1-3/4
HA182-112-087S-187-4	1-7/8
HA182-112-087S-200-4	2
HA182-112-087S-212-4	2-1/8
HA182-112-087S-225-4	2-1/4
HA182-112-087S-237-4	2-3/8

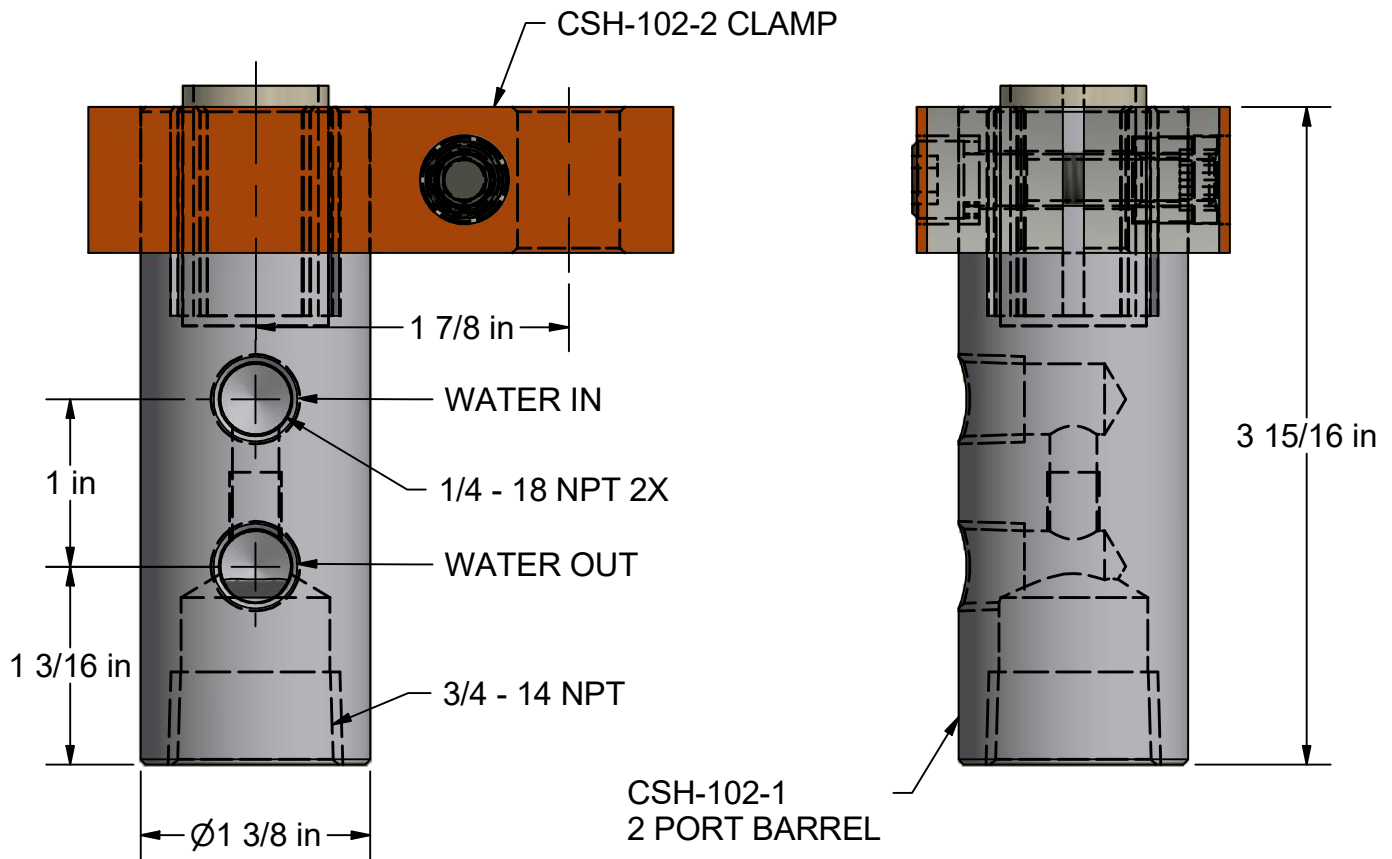
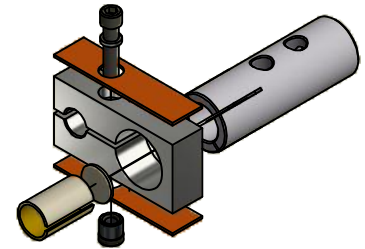
7/8-14 WITH 5RW ELECTRODE TAPER	
PART NUMBER	OVERALL LENGTH (in)
HA182-112-087S-112-5	1-1/8
HA182-112-087S-125-5	1-1/4
HA182-112-087S-137-5	1-3/8
HA182-112-087S-150-5	1-1/2
HA182-112-087S-162-5	1-5/8
HA182-112-087S-175-5	1-3/4
HA182-112-087S-187-5	1-7/8
HA182-112-087S-200-5	2
HA182-112-087S-212-5	2-1/8
HA182-112-087S-225-5	2-1/4
HA182-112-087S-237-5	2-3/8



Gadi
Company
Inc.

CSH-102-A ELECTRODE HOLDER ASSEMBLY

FITS STANDARD WELD
CYLINDERS WITH TYPE "A" AND
TYPE "N" PISTON ROD ENDS



COMPATIBLE WITH THE FOLLOWING ELECTRODE ADAPTORS
(LONGER ADAPTORS AVAILABLE UPON REQUEST.)

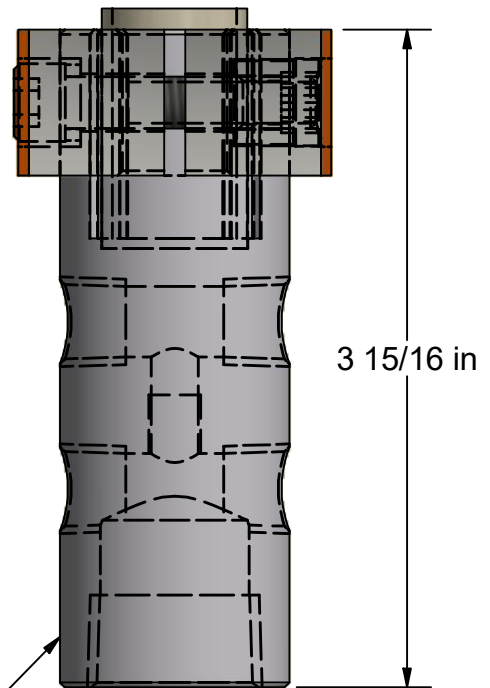
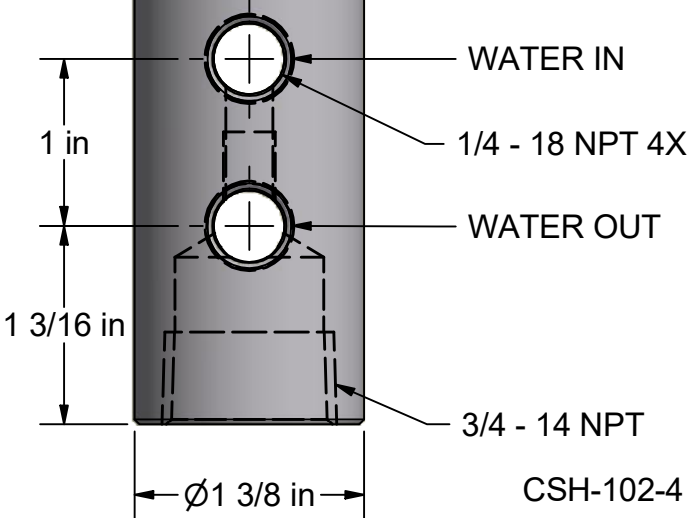
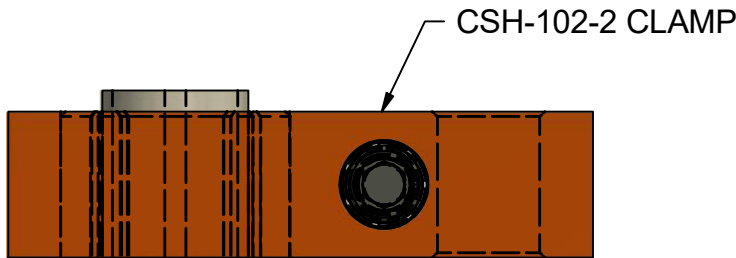
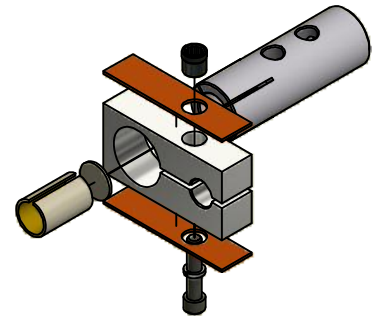
3/4" NPT WITH 5RW ELECTRODE TAPER	
PART NUMBER	OVERALL LENGTH (in)
HA182-125-075P-137-5	1-3/8
HA182-125-075P-150-5	1-1/2
HA182-125-075P-175-5	1-3/4
HA182-125-075P-200-5	2
HA182-125-075P-225-5	2-1/4
HA182-125-075P-250-5	2-1/2
HA182-125-075P-275-5	2-3/4
HA182-125-075P-300-5	3
HA182-125-075P-325-5	3-1/4
HA182-125-075P-350-5	3-1/2
HA182-125-075P-375-5	3-3/4

3/4" NPT WITH 6RW ELECTRODE TAPER	
PART NUMBER	OVERALL LENGTH (in)
HA182-125-075P-137-6	1-3/8
HA182-125-075P-150-6	1-1/2
HA182-125-075P-175-6	1-3/4
HA182-125-075P-200-6	2
HA182-125-075P-225-6	2-1/4
HA182-125-075P-250-6	2-1/2
HA182-125-075P-275-6	2-3/4
HA182-125-075P-300-6	3
HA182-125-075P-325-6	3-1/4
HA182-125-075P-350-6	3-1/2
HA182-125-075P-375-6	3-3/4



CSH-102-B ELECTRODE HOLDER ASSEMBLY

FITS STANDARD WELD CYLINDERS WITH TYPE "A" AND TYPE "N" PISTON ROD ENDS



COMPATIBLE WITH THE FOLLOWING ELECTRODE ADAPTORS
(LONGER ADAPTORS AVAILABLE UPON REQUEST.)

3/4" NPT WITH 5RW ELECTRODE TAPER	
PART NUMBER	OVERALL LENGTH (in)
HA182-125-075P-137-5	1-3/8
HA182-125-075P-150-5	1-1/2
HA182-125-075P-175-5	1-3/4
HA182-125-075P-200-5	2
HA182-125-075P-225-5	2-1/4
HA182-125-075P-250-5	2-1/2
HA182-125-075P-275-5	2-3/4
HA182-125-075P-300-5	3
HA182-125-075P-325-5	3-1/4
HA182-125-075P-350-5	3-1/2
HA182-125-075P-375-5	3-3/4

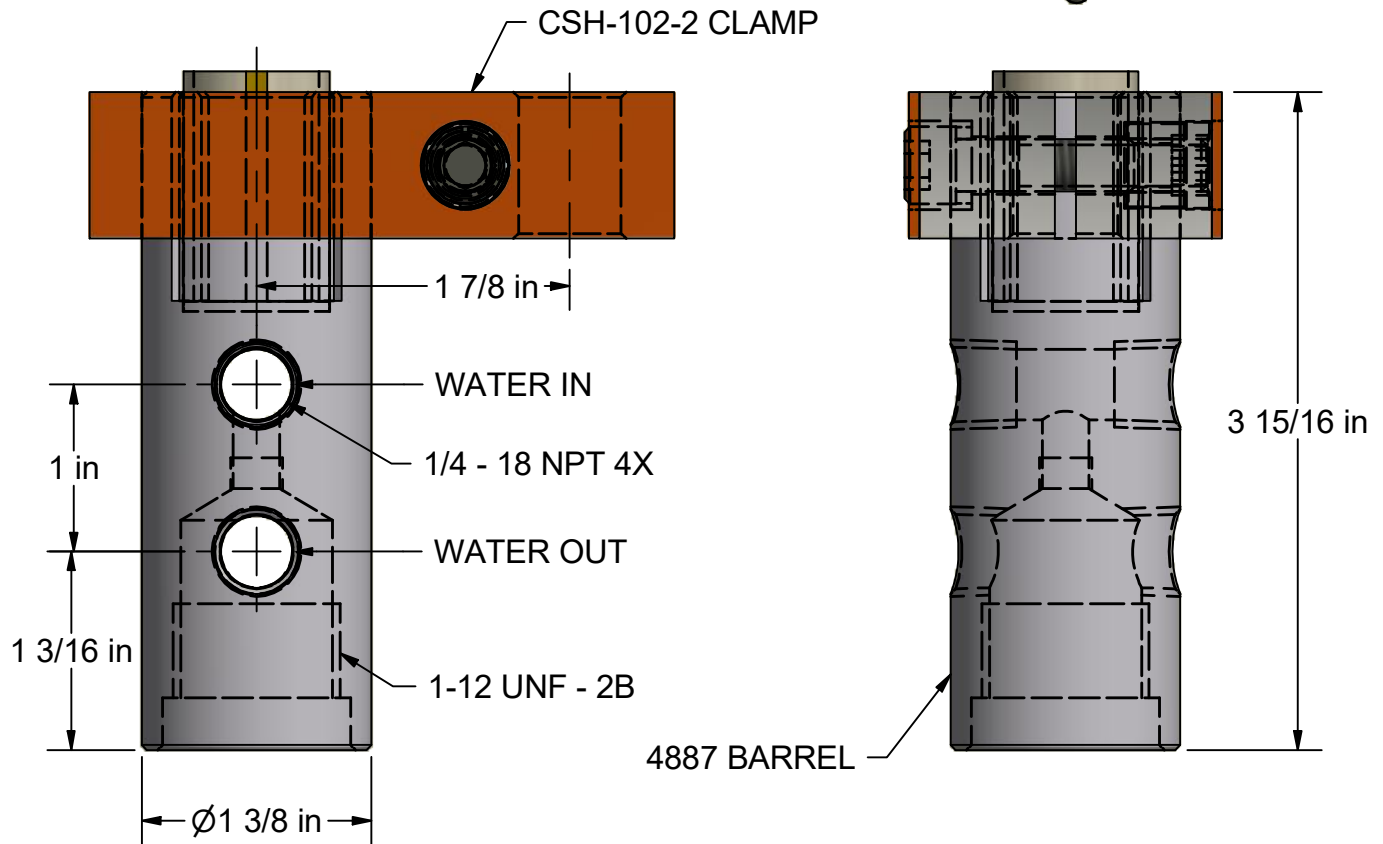
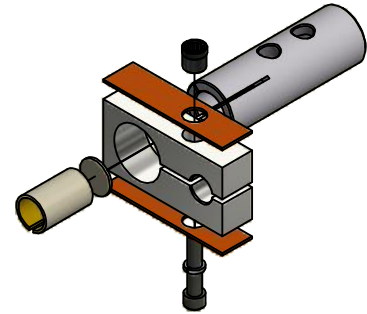
3/4" NPT WITH 6RW ELECTRODE TAPER	
PART NUMBER	OVERALL LENGTH (in)
HA182-125-075P-137-6	1-3/8
HA182-125-075P-150-6	1-1/2
HA182-125-075P-175-6	1-3/4
HA182-125-075P-200-6	2
HA182-125-075P-225-6	2-1/4
HA182-125-075P-250-6	2-1/2
HA182-125-075P-275-6	2-3/4
HA182-125-075P-300-6	3
HA182-125-075P-325-6	3-1/4
HA182-125-075P-350-6	3-1/2
HA182-125-075P-375-6	3-3/4



**Cadi
Company
Inc.**

CSH-102-B-1S ELECTRODE HOLDER ASSEMBLY

FITS STANDARD WELD
CYLINDERS WITH TYPE "A" AND
TYPE "N" PISTON ROD ENDS



COMPATIBLE WITH THE FOLLOWING ELECTRODE ADAPTORS
(LONGER ADAPTORS AVAILABLE UPON REQUEST.)

1-12 WITH 5RW ELECTRODE TAPER	
PART NUMBER	OVERALL LENGTH (in)
HA182-125-100S-112-5	1-1/8
HA182-125-100S-125-5	1-1/4
HA182-125-100S-137-5	1-3/8
HA182-125-100S-150-5	1-1/2
HA182-125-100S-162-5	1-5/8
HA182-125-100S-175-5	1-3/4
HA182-125-100S-187-5	1-7/8
HA182-125-100S-200-5	2
HA182-125-100S-212-5	2-1/8
HA182-125-100S-225-5	2-1/4
HA182-125-100S-237-5	2-3/8

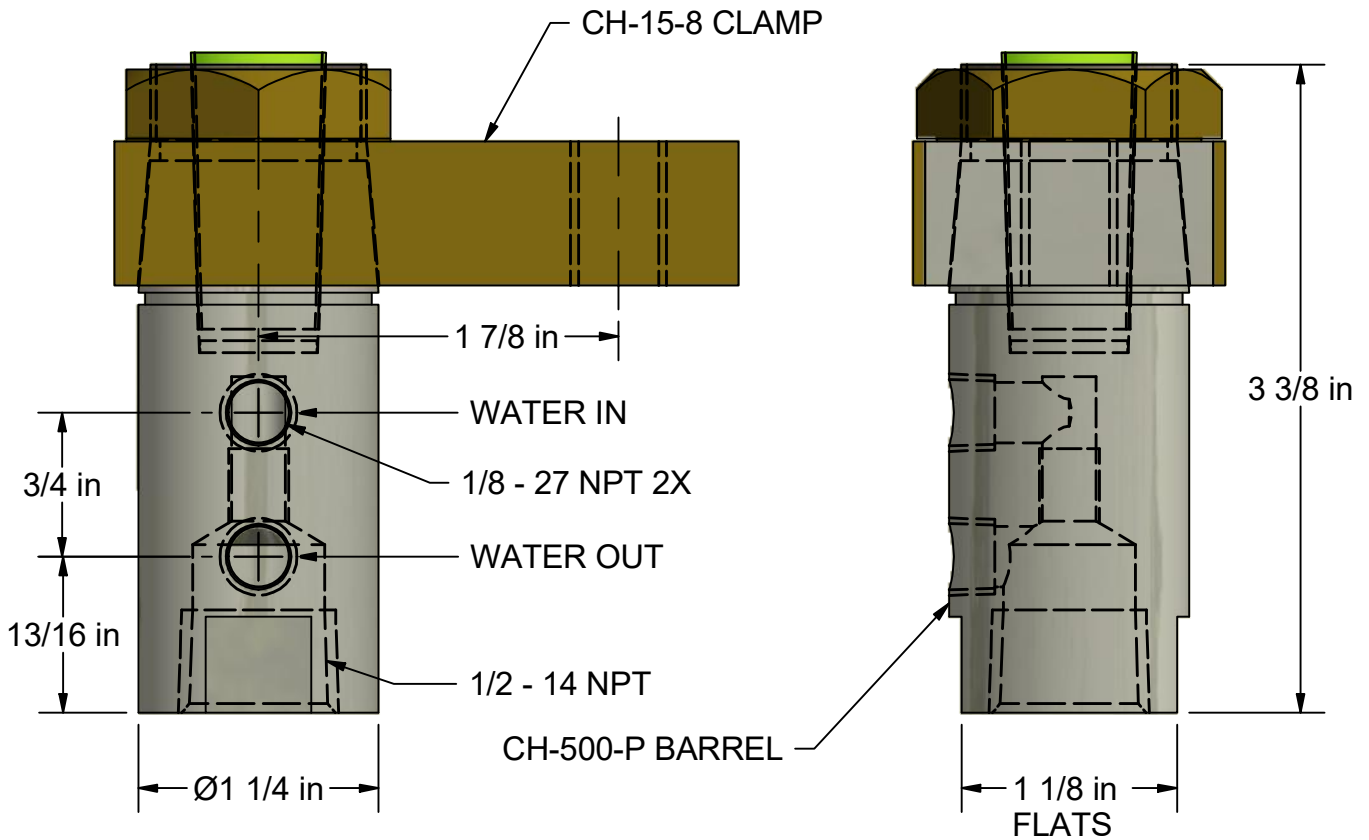
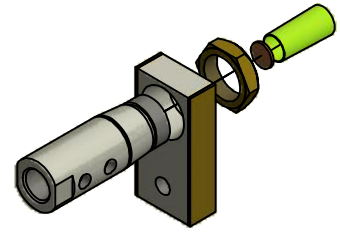
1-12 WITH 6RW ELECTRODE TAPER	
PART NUMBER	OVERALL LENGTH (in)
HA182-125-100S-112-6	1-1/8
HA182-125-100S-125-6	1-1/4
HA182-125-100S-137-6	1-3/8
HA182-125-100S-150-6	1-1/2
HA182-125-100S-162-6	1-5/8
HA182-125-100S-175-6	1-3/4
HA182-125-100S-187-6	1-7/8
HA182-125-100S-200-6	2
HA182-125-100S-212-6	2-1/8
HA182-125-100S-225-6	2-1/4
HA182-125-100S-237-6	2-3/8



Gadi
Company
Inc.

SERIES CH ELECTRODE HOLDER ASSEMBLY

FITS STANDARD WELD
CYLINDERS WITH TYPE "H"
PISTON ROD ENDS



COMPATIBLE WITH THE FOLLOWING ELECTRODE ADAPTORS
(LONGER ADAPTORS AVAILABLE UPON REQUEST.)

1/2" NPT WITH 4RW ELECTRODE TAPER	
PART NUMBER	OVERALL LENGTH (in)
HA182-100-050P-087-4	7/8
HA182-100-050P-112-4	1-1/8
HA182-100-050P-137-4	1-3/8
HA182-100-050P-162-4	1-5/8
HA182-100-050P-187-4	1-7/8
HA182-100-050P-212-4	2-1/8
HA182-100-050P-237-4	2-3/8
HA182-100-050P-262-4	2-5/8
HA182-100-050P-287-4	2-7/8
HA182-100-050P-312-4	3-1/8
HA182-100-050P-337-4	3-3/8

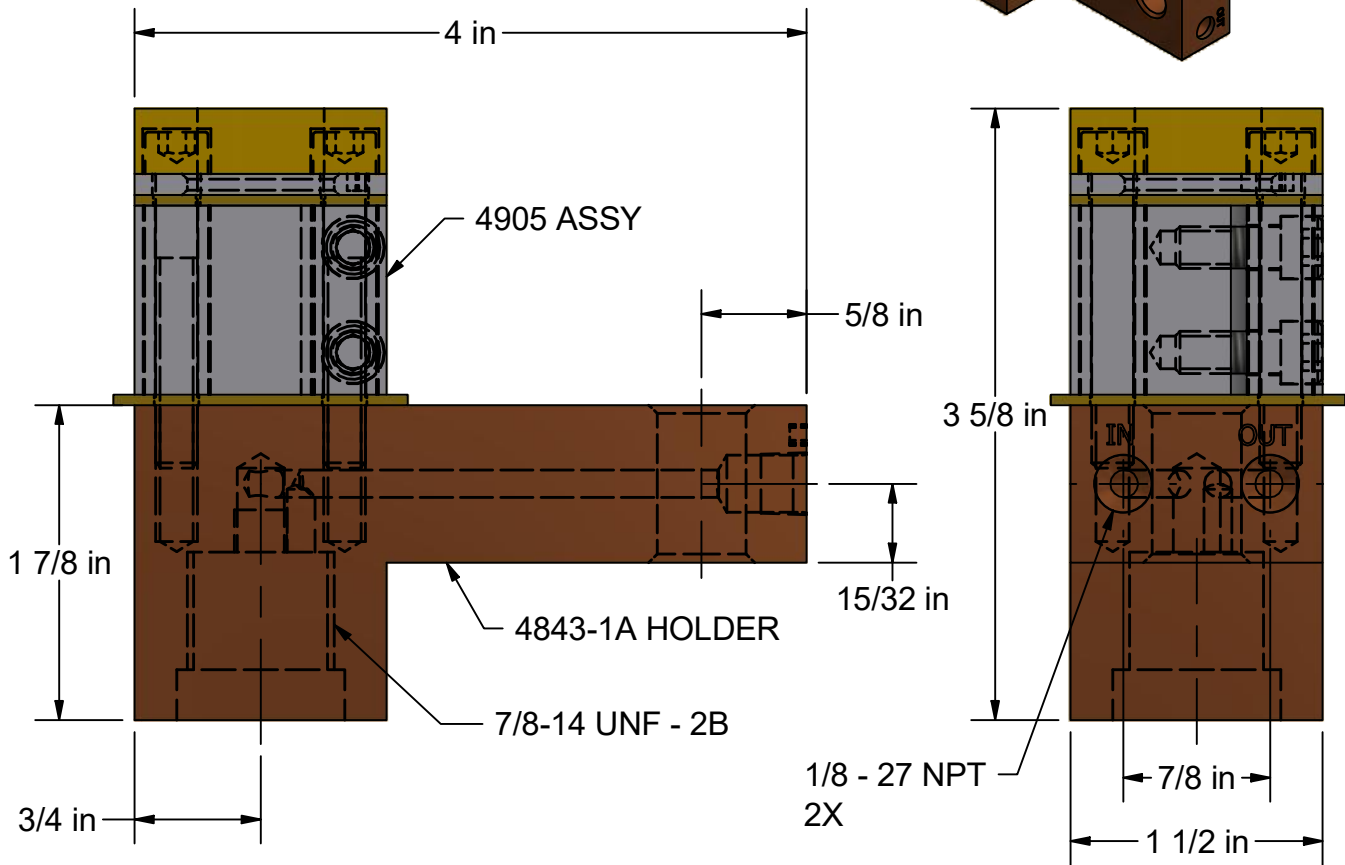
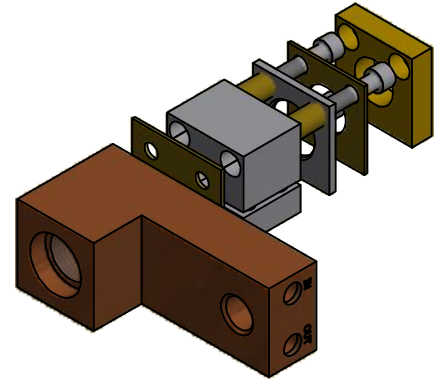
1/2" NPT WITH 5RW ELECTRODE TAPER	
PART NUMBER	OVERALL LENGTH (in)
HA182-100-050P-087-5	7/8
HA182-100-050P-112-5	1-1/8
HA182-100-050P-137-5	1-3/8
HA182-100-050P-162-5	1-5/8
HA182-100-050P-187-5	1-7/8
HA182-100-050P-212-5	2-1/8
HA182-100-050P-237-5	2-3/8
HA182-100-050P-262-5	2-5/8
HA182-100-050P-287-5	2-7/8
HA182-100-050P-312-5	3-1/8
HA182-100-050P-337-5	3-3/8



Gadi
Company
Inc.

C-4843-A ELECTRODE HOLDER ASSEMBLY

FITS STANDARD WELD
CYLINDERS WITH TYPE "A" AND
TYPE "N" PISTON ROD ENDS



COMPATIBLE WITH THE FOLLOWING ELECTRODE ADAPTORS
(LONGER ADAPTORS AVAILABLE UPON REQUEST.)

7/8-14 WITH 4RW ELECTRODE TAPER	
PART NUMBER	OVERALL LENGTH (in)
HA182-112-087S-112-4	1-1/8
HA182-112-087S-125-4	1-1/4
HA182-112-087S-137-4	1-3/8
HA182-112-087S-150-4	1-1/2
HA182-125-087S-162-4	1-5/8
HA182-112-087S-175-4	1-3/4
HA182-112-087S-187-4	1-7/8
HA182-112-087S-200-4	2
HA182-112-087S-212-4	2-1/8
HA182-112-087S-225-4	2-1/4
HA182-112-087S-237-4	2-3/8

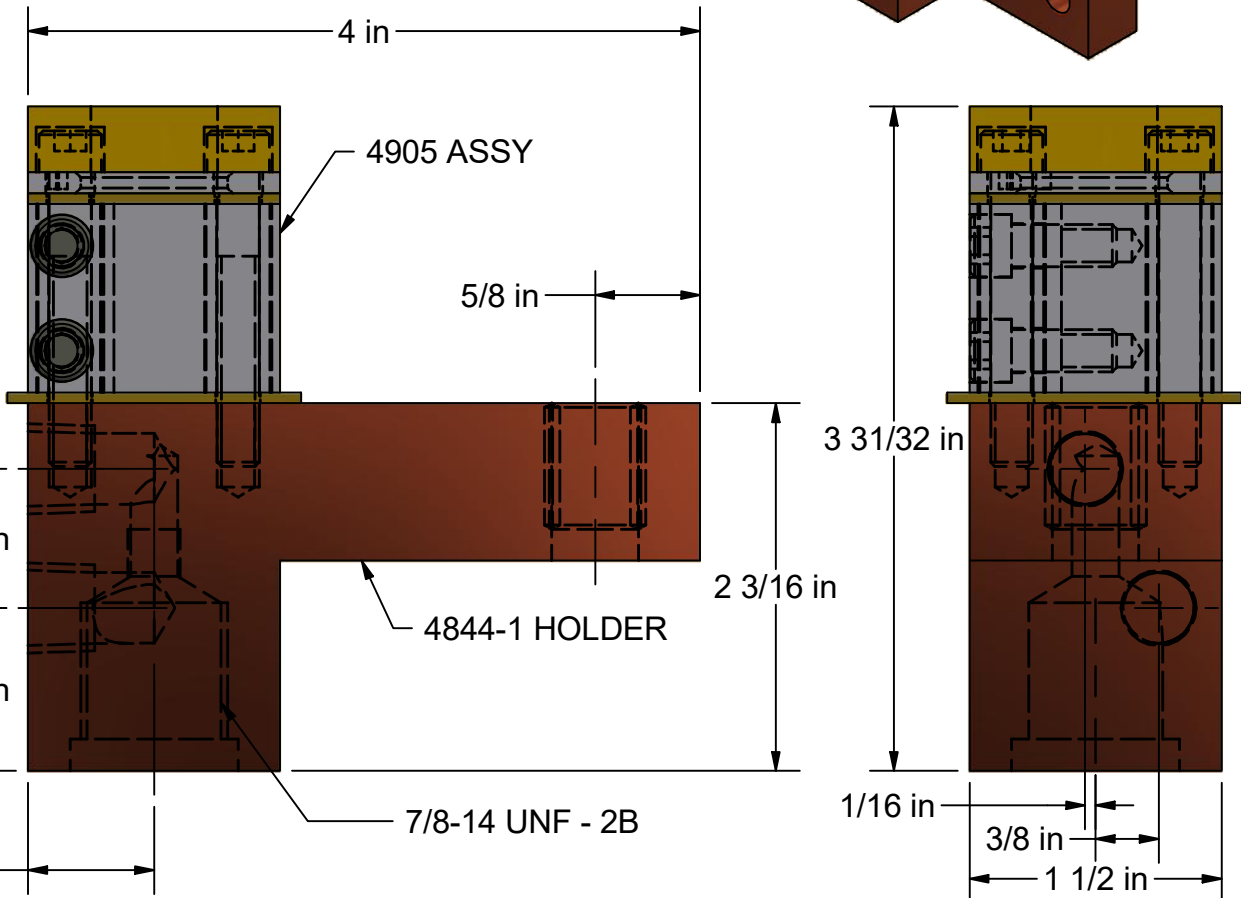
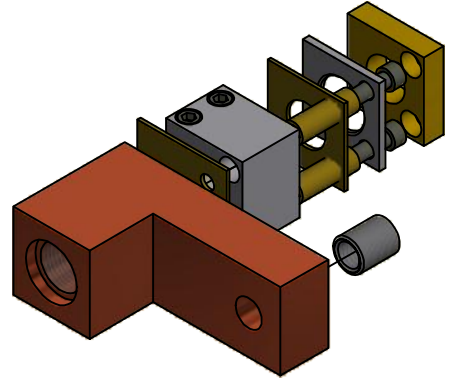
7/8-14 WITH 5RW ELECTRODE TAPER	
PART NUMBER	OVERALL LENGTH (in)
HA182-112-087S-112-5	1-1/8
HA182-112-087S-125-5	1-1/4
HA182-112-087S-137-5	1-3/8
HA182-112-087S-150-5	1-1/2
HA182-112-087S-162-5	1-5/8
HA182-112-087S-175-5	1-3/4
HA182-112-087S-187-5	1-7/8
HA182-112-087S-200-5	2
HA182-112-087S-212-5	2-1/8
HA182-112-087S-225-5	2-1/4
HA182-112-087S-237-5	2-3/8



Gadi
Company
Inc.

C-4844 ELECTRODE HOLDER ASSEMBLY

FITS STANDARD WELD
CYLINDERS WITH TYPE "A" AND
TYPE "N" PISTON ROD ENDS



COMPATIBLE WITH THE FOLLOWING ELECTRODE ADAPTORS
(LONGER ADAPTORS AVAILABLE UPON REQUEST.)

7/8-14 WITH 4RW ELECTRODE TAPER	
PART NUMBER	OVERALL LENGTH (in)
HA182-112-087S-112-4	1-1/8
HA182-112-087S-125-4	1-1/4
HA182-112-087S-137-4	1-3/8
HA182-112-087S-150-4	1-1/2
HA182-125-087S-162-4	1-5/8
HA182-112-087S-175-4	1-3/4
HA182-112-087S-187-4	1-7/8
HA182-112-087S-200-4	2
HA182-112-087S-212-4	2-1/8
HA182-112-087S-225-4	2-1/4
HA182-112-087S-237-4	2-3/8

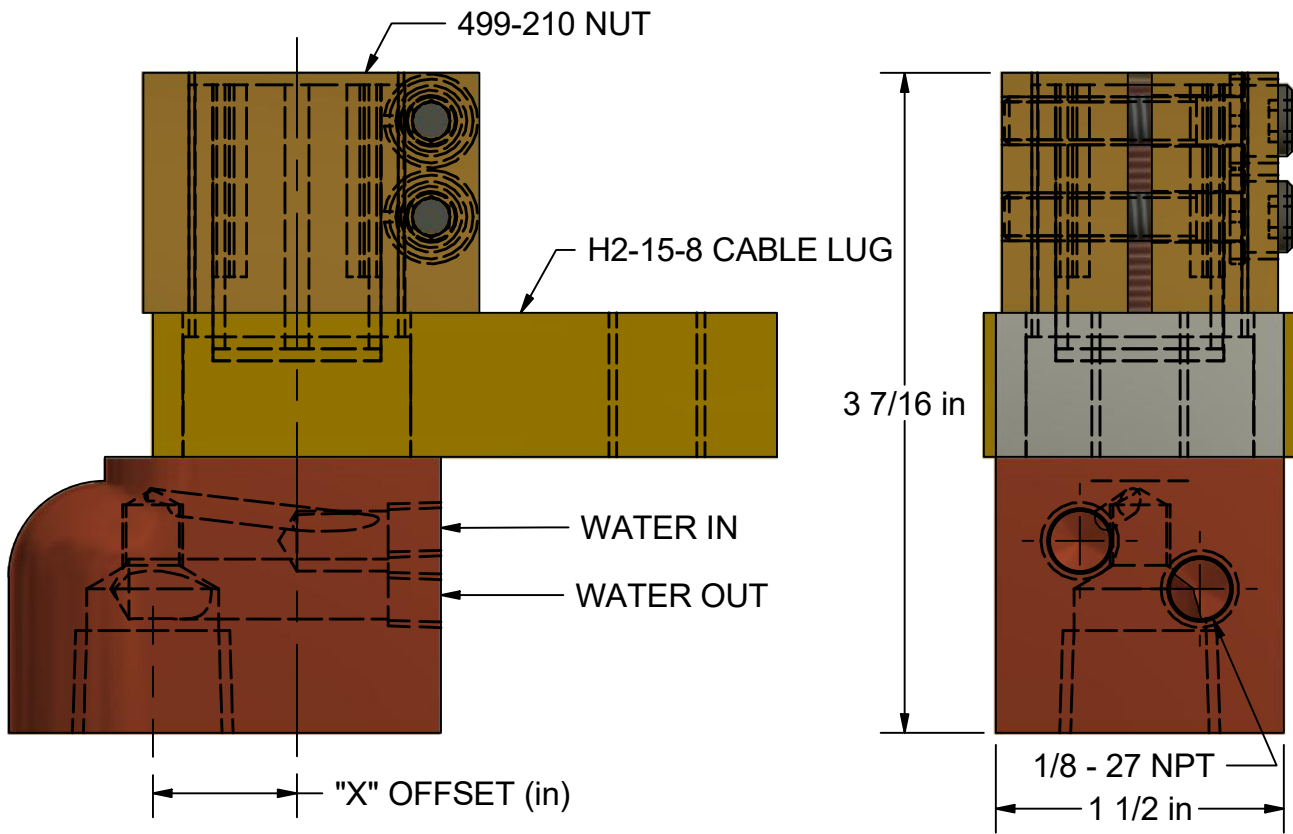
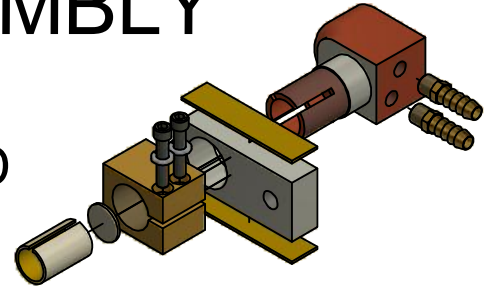
7/8-14 WITH 5RW ELECTRODE TAPER	
PART NUMBER	OVERALL LENGTH (in)
HA182-112-087S-112-5	1-1/8
HA182-112-087S-125-5	1-1/4
HA182-112-087S-137-5	1-3/8
HA182-112-087S-150-5	1-1/2
HA182-112-087S-162-5	1-5/8
HA182-112-087S-175-5	1-3/4
HA182-112-087S-187-5	1-7/8
HA182-112-087S-200-5	2
HA182-112-087S-212-5	2-1/8
HA182-112-087S-225-5	2-1/4
HA182-112-087S-237-5	2-3/8



Gadi
Company
Inc.

GROUP 1 OFFSET ELECTRODE HOLDER ASSEMBLY

FITS STANDARD WELD
CYLINDERS WITH TYPE "A" AND
TYPE "N" PISTON ROD ENDS



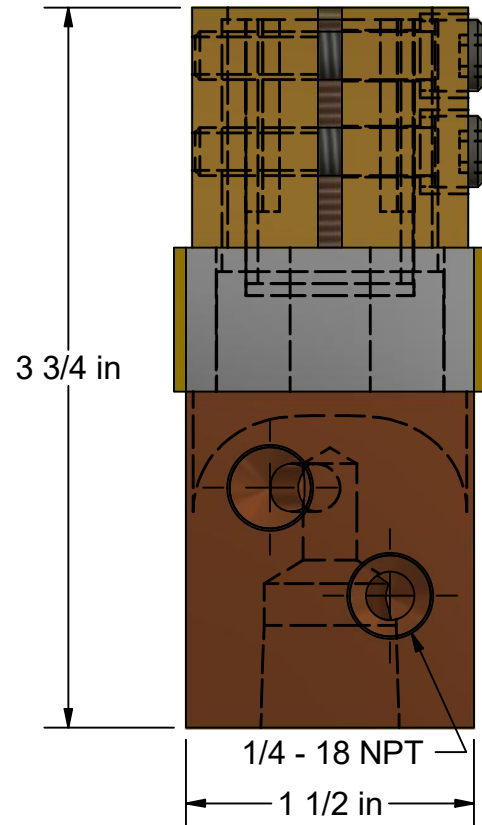
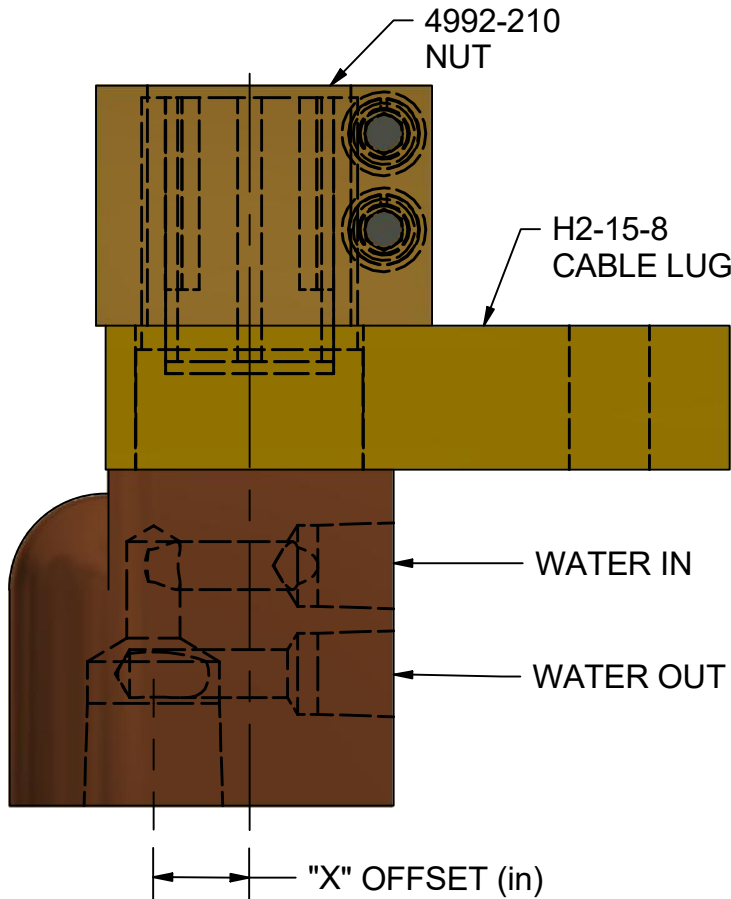
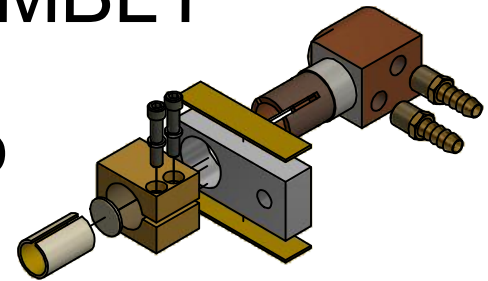
7/8-14 THREADED ADAPTOR			1/2-14 NPT THREADED ADAPTOR (shown above)		
ASSEMBLY NO.	DETAIL NO.	"X" OFFSET	ASSEMBLY NO.	DETAIL NO.	"X" OFFSET
A-00-1-87F-12	4850-0	0	A-00-1-50P-12	4851-0	0
A-12-1-87F-12	4850-1	1/8	A-12-1-50P-12	4851-1	1/8
A-25-1-87F-12	4850-2	1/4	A-25-1-50P-12	4851-2	1/4
A-38-1-87F-12	4850-3	3/8	A-38-1-50P-12	4851-3	3/8
A-50-1-87F-12	4850-4	1/2	A-50-1-50P-12	4851-4	1/2
A-62-1-87F-12	4850-5	5/8	A-62-1-50P-12	4851-5	5/8
A-75-1-87F-12	4850-6	3/4	A-75-1-50P-12	4851-6	3/4



Gadi
Company
Inc.

GROUP 2 OFFSET ELECTRODE HOLDER ASSEMBLY

FITS STANDARD WELD
CYLINDERS WITH TYPE "A" AND
TYPE "N" PISTON ROD ENDS



7/8-14 THREADED ADAPTOR

1/2-14 NPT THREADED ADAPTOR (shown above)

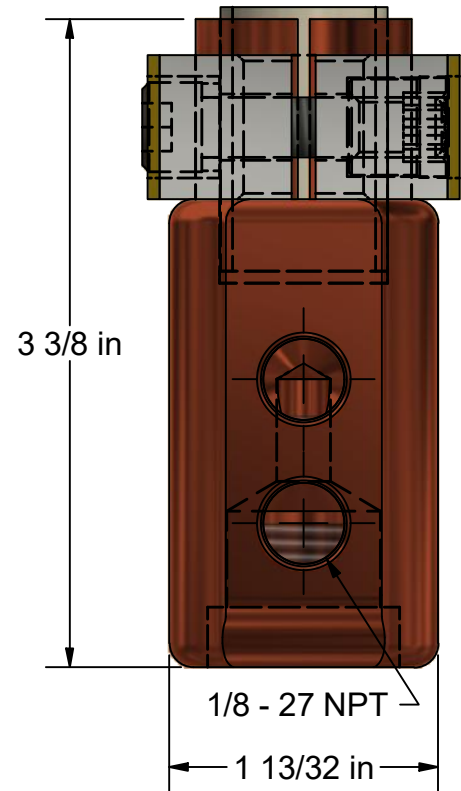
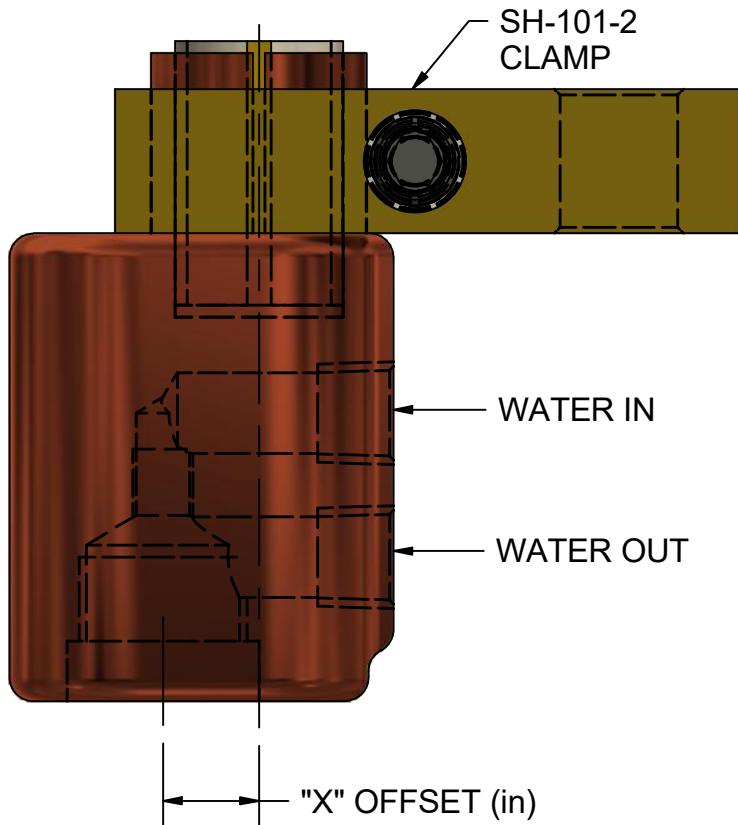
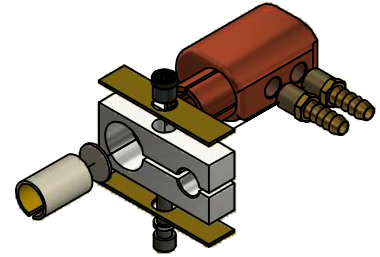
ASSEMBLY NO.	DETAIL NO.	"X" OFFSET	ASSEMBLY NO.	DETAIL NO.	"X" OFFSET
A-00-2-87F-25	4854-0	0	A-00-2-50P-25	4855-0	0
A-12-2-87F-25	4854-1	1/8	A-12-2-50P-25	4855-1	1/8
A-25-2-87F-25	4854-2	1/4	A-25-2-50P-25	4855-2	1/4
A-38-2-87F-25	4854-3	3/8	A-38-2-50P-25	4855-3	3/8
A-50-2-87F-25	4854-4	1/2	A-50-2-50P-25	4855-4	1/2
A-62-2-87F-25	4854-5	5/8	A-62-2-50P-25	4855-5	5/8
A-75-2-87F-25	4854-6	3/4	A-75-2-50P-25	4855-6	3/4



Gadi
Company
Inc.

GROUP 5 OFFSET ELECTRODE HOLDER ASSEMBLY

FITS STANDARD WELD
CYLINDERS WITH TYPE "A" AND
TYPE "N" PISTON ROD ENDS



7/8-14 THREADED ADAPTOR
(shown above)

1/2-14 NPT THREADED
ADAPTOR

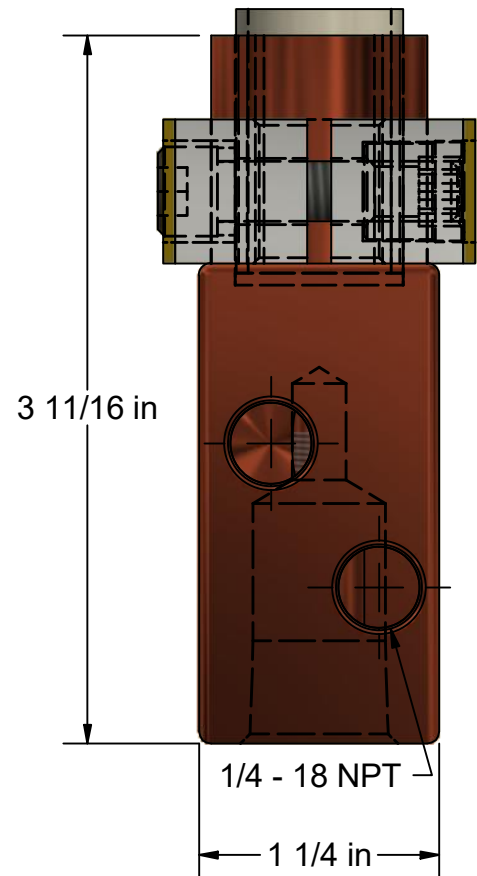
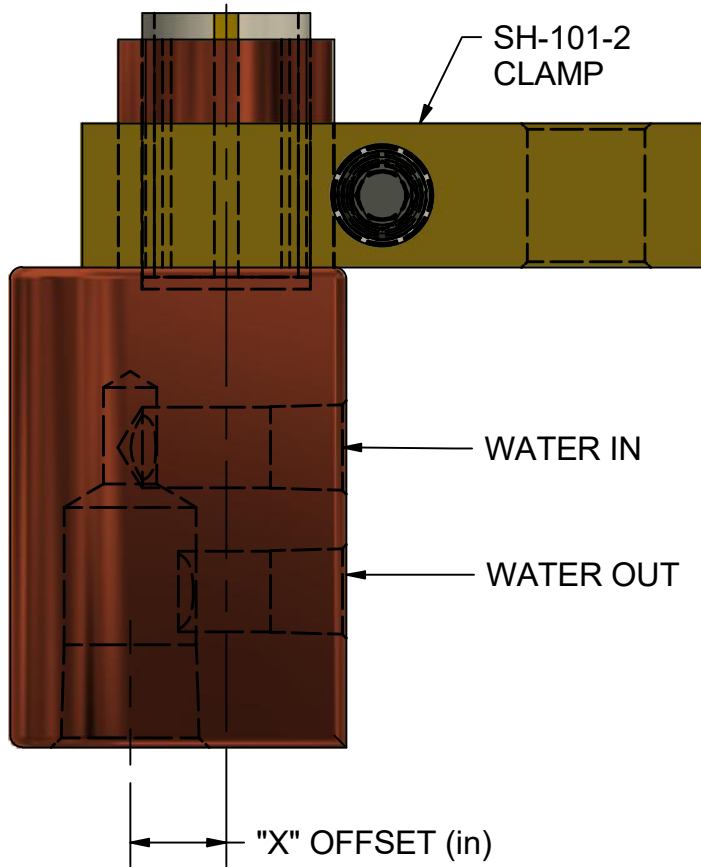
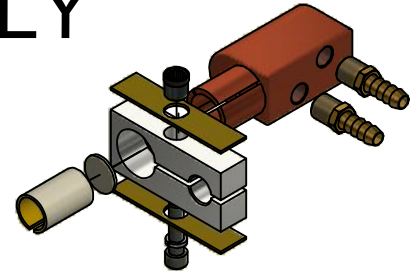
ASSEMBLY NO.	DETAIL NO.	"X" OFFSET	ASSEMBLY NO.	DETAIL NO.	"X" OFFSET
A-00-5-87F-12	4850-0F	0	A-00-5-50P-12	4851-0F	0
A-12-5-87F-12	4850-1F	1/8	A-12-5-50P-12	4851-1F	1/8
A-25-5-87F-12	4850-2F	1/4	A-25-5-50P-12	4851-2F	1/4
A-38-5-87F-12	4850-3F	3/8	A-38-5-50P-12	4851-3F	3/8
A-50-5-87F-12	4850-4F	1/2	A-50-5-50P-12	4851-4F	1/2
A-62-5-87F-12	4850-5F	5/8	A-62-5-50P-12	4851-5F	5/8
A-75-5-87F-12	4850-6F	3/4	A-75-5-50P-12	4851-6F	3/4



Gadi
Company
Inc.

GROUP 6 OFFSET ELECTRODE HOLDER ASSEMBLY

FITS STANDARD WELD
CYLINDERS WITH TYPE "A" AND
TYPE "N" PISTON ROD ENDS



7/8-14 THREADED ADAPTOR

1/2-14 NPT THREADED
ADAPTOR (shown above)

ASSEMBLY NO.	DETAIL NO.	"X" OFFSET	ASSEMBLY NO.	DETAIL NO.	"X" OFFSET
A-00-6-87F-25	4854-0F	0	A-00-6-50P-25	4855-0F	0
A-12-6-87F-25	4854-1F	1/8	A-12-6-50P-25	4855-1F	1/8
A-25-6-87F-25	4854-2F	1/4	A-25-6-50P-25	4855-2F	1/4
A-38-6-87F-25	4854-3F	3/8	A-38-6-50P-25	4855-3F	3/8
A-50-6-87F-25	4854-4F	1/2	A-50-6-50P-25	4855-4F	1/2
A-62-6-87F-25	4854-5F	5/8	A-62-6-50P-25	4855-5F	5/8
A-75-6-87F-25	4854-6F	3/4	A-75-6-50P-25	4855-6F	3/4



**Cadi
Company
Inc.**

CADI-COPPR LUBE

Coppr-Lube is a paste-like lubricant that provides an effective solution to prevent galling and seizing of components in resistance welding environments.

-Most resistance welding operations use copper alloy components that are joined by a simple mechanical straight or tapered fit as well as threaded connections.

-Under the high pressure of welding, these components can cold weld or seize when disassembling. The copper alloy parts can gall due to this cold-welding and cause premature part failure. Excessive force may be required to disassemble the parts which can distort or become damaged.

-Cadi Coppr-Lube applied to mating copper alloy surfaces protects against seizing and galling, allowing easy disassembly. Also, corrosion and oxidation of applied surfaces is inhibited.

-Coppr-Lube has also been shown to be effective in sealing and lubricating NPT threads as used in resistance welding holders and adaptors.

-Used successfully for decades, application of Coppr-Lube assures electrical continuity of the welding system because it is formulated with copper, one of the best electrical conductors known. It applies easily as a paste, by brush, which allows it to flow easily into threads and cavities.



Formulation and Product Notes

-Coppr-Lube is petroleum based with additives, notably colloidal copper, which enhances electrical conductivity at the coated mating surfaces.

-Coppr-Lube is a stable mixture; it does not separate or settle.

-Supplied in brush-top cans, application is fast, simple, and lasting.

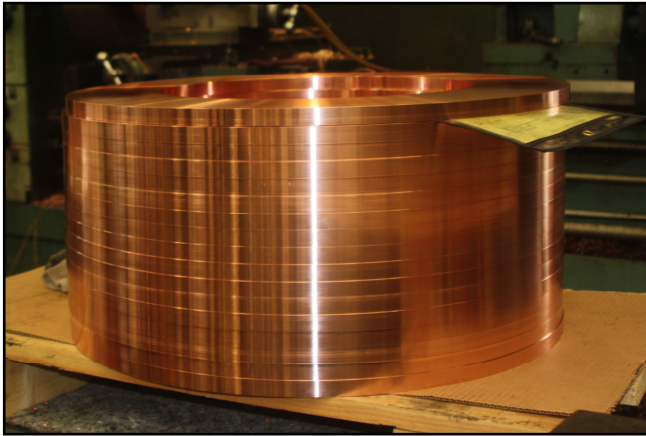
-Available from stock in 1 lb. brush-top cans; 1 can or a case of 12 cans.

-Other container sizes are available.

Cadi Company, Inc.
www.cadicompany.com

P.O. Box 1127, 60 Rado Drive, Naugatuck, CT 06770
800-243-3650 203-729-1111 Fax 203-729-1919

RESISTANCE WELDING PRODUCTS





Cadi Company Inc.



Cadi Company, Inc. believes the contents of this catalog to be correct at the time of publication and shall not be held responsible for any typos or misspellings. For general terms and condition of sales refer to www.cadicompany.com.

This Cadi Company, Inc. product catalog is provided for the private use of our customers. This catalog cannot be reproduced (in part or in whole) or used for any other purpose without expressed written permission from Cadi Company, Inc. The catalog and pictures are sole property of Cadi Company, Inc.

Cadi Company, Inc.
www.cadicompany.com

PO Box 1127, 60 Rado Drive, Naugatuck, CT 06770
(800)243-3650 (203)729-1111 Fax (203)729-1919

2019.04.25